

KENTUCKY STATE UNIVERSITY

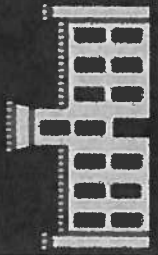
Student Success and Enrollment Management (SSEM) Update

Board of Regents Meeting

September 12, 2014

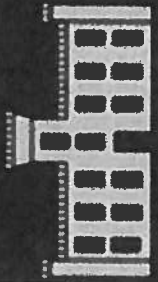
Overview of Discussion

- **Fall 2014 Enrollment**
- **Observations from Fall 2014 Registration Process**
- **Registration Process Improvement Plan**
- **Residence Hall Occupancy Report**
- **Residence Hall Consolidation Plan**

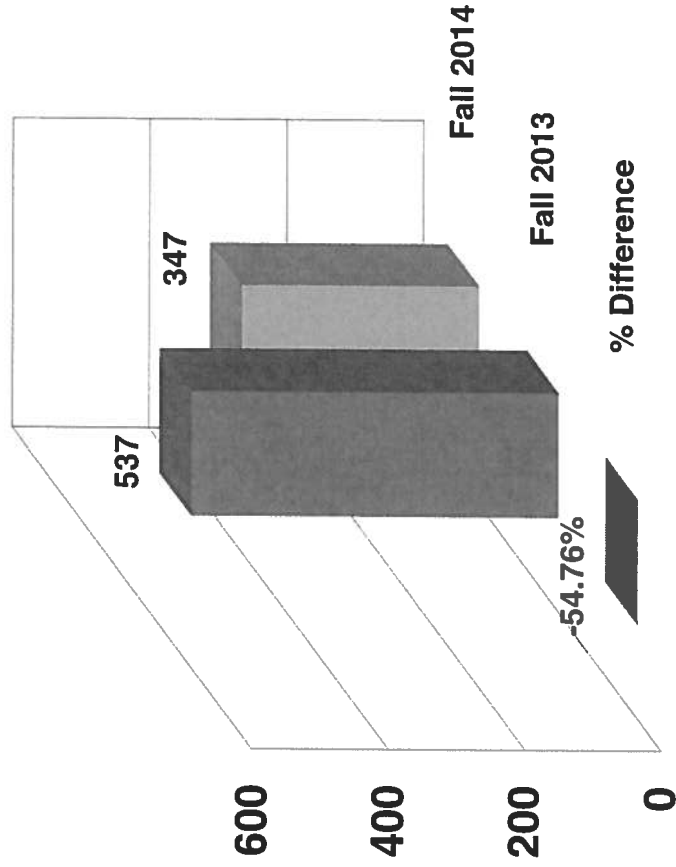


KENTUCKY STATE UNIVERSITY

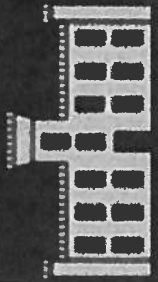
Fall 2014 Enrollment Update



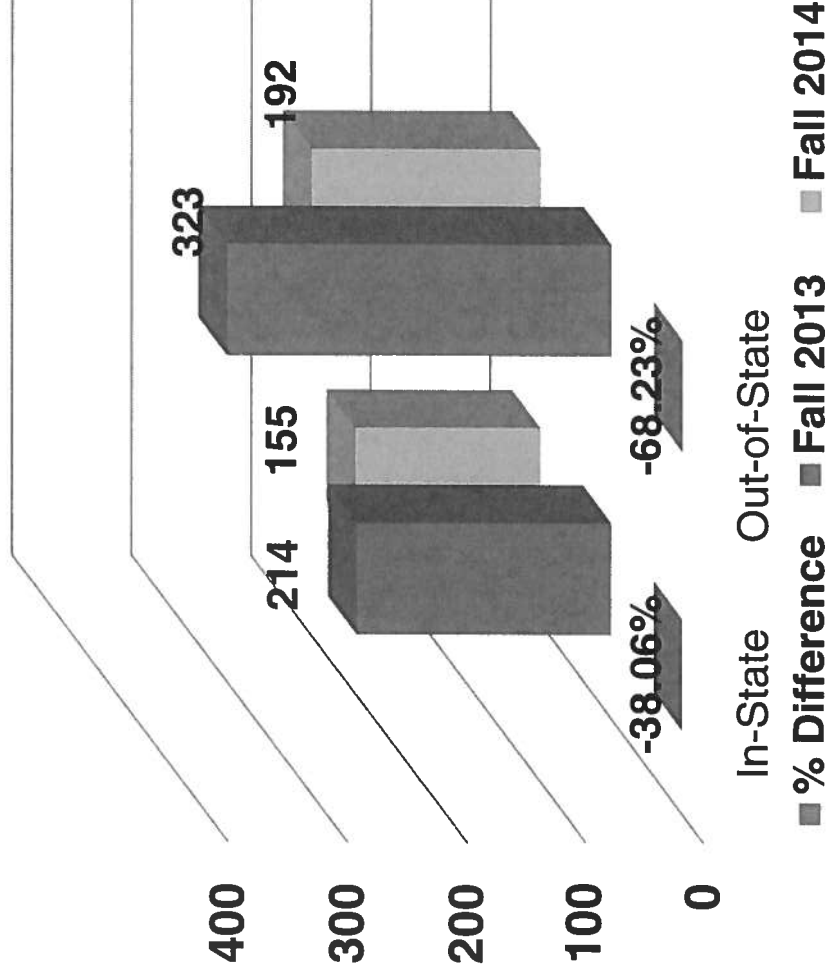
Fall 2013 to Fall 2014 First-Time Freshman

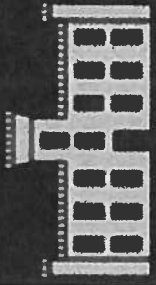


■ % Difference ■ Fall 2013 ■ Fall 2014

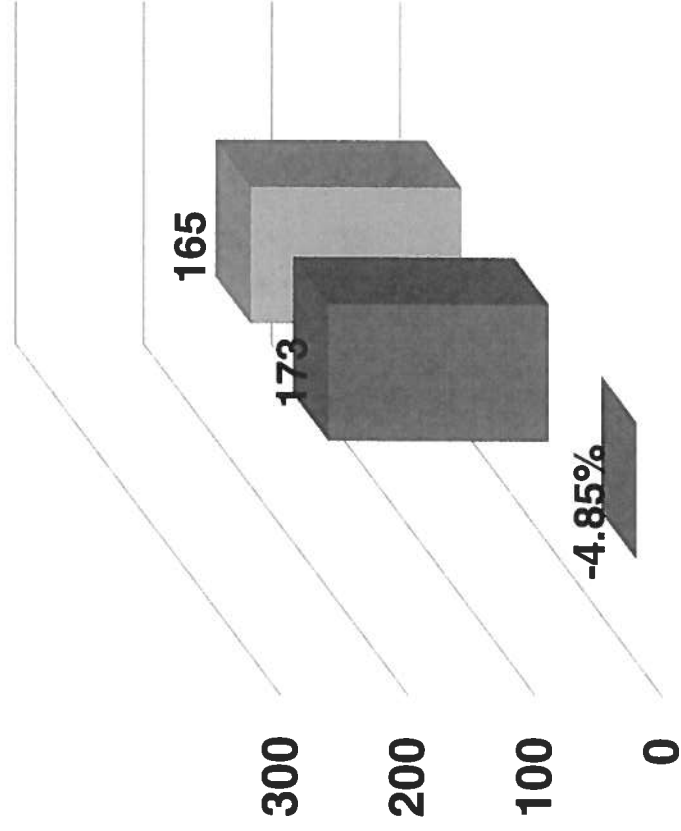


Fall 2013 to Fall 2014 First-Time Freshman by Residency

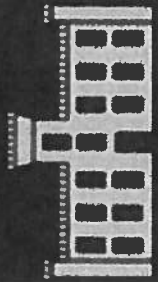




Fall 2013 to Fall 2014 First-Time Transfers

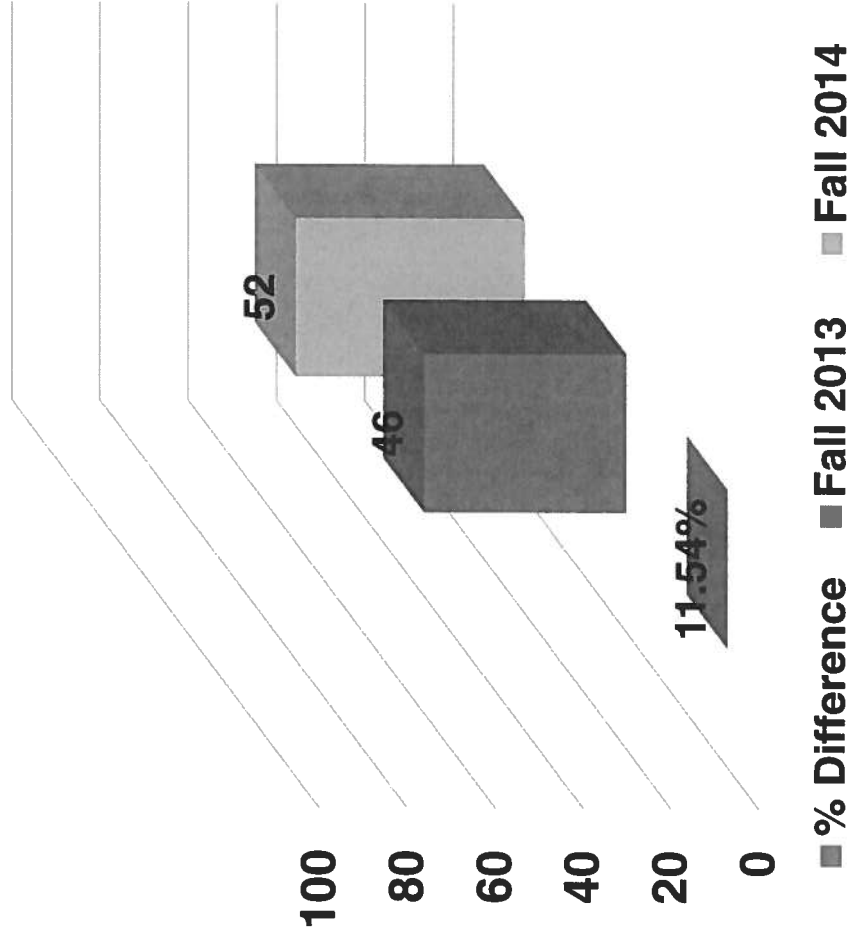


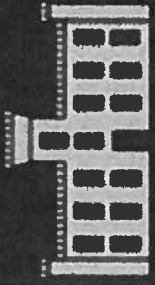
■ % Difference ■ Fall 2013 ■ Fall 2014



KENTUCKY STATE UNIVERSITY

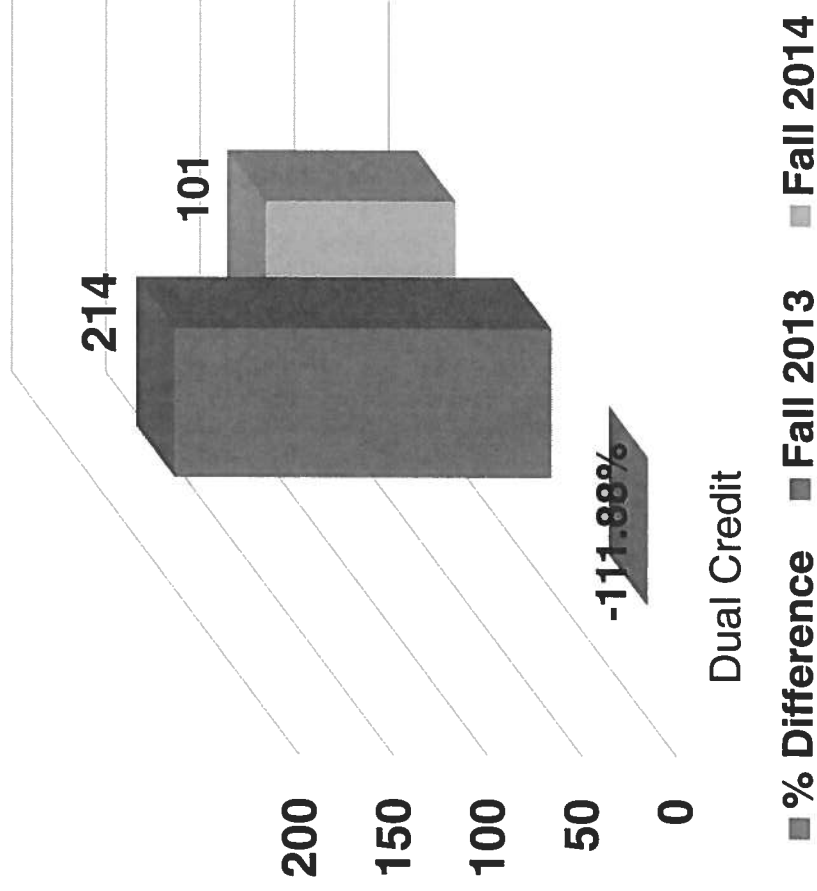
Fall 2013 to Fall 2014 First-Time Graduate

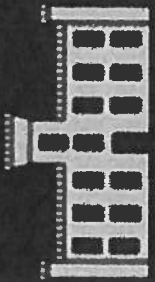




Fall 2013 to Fall 2014

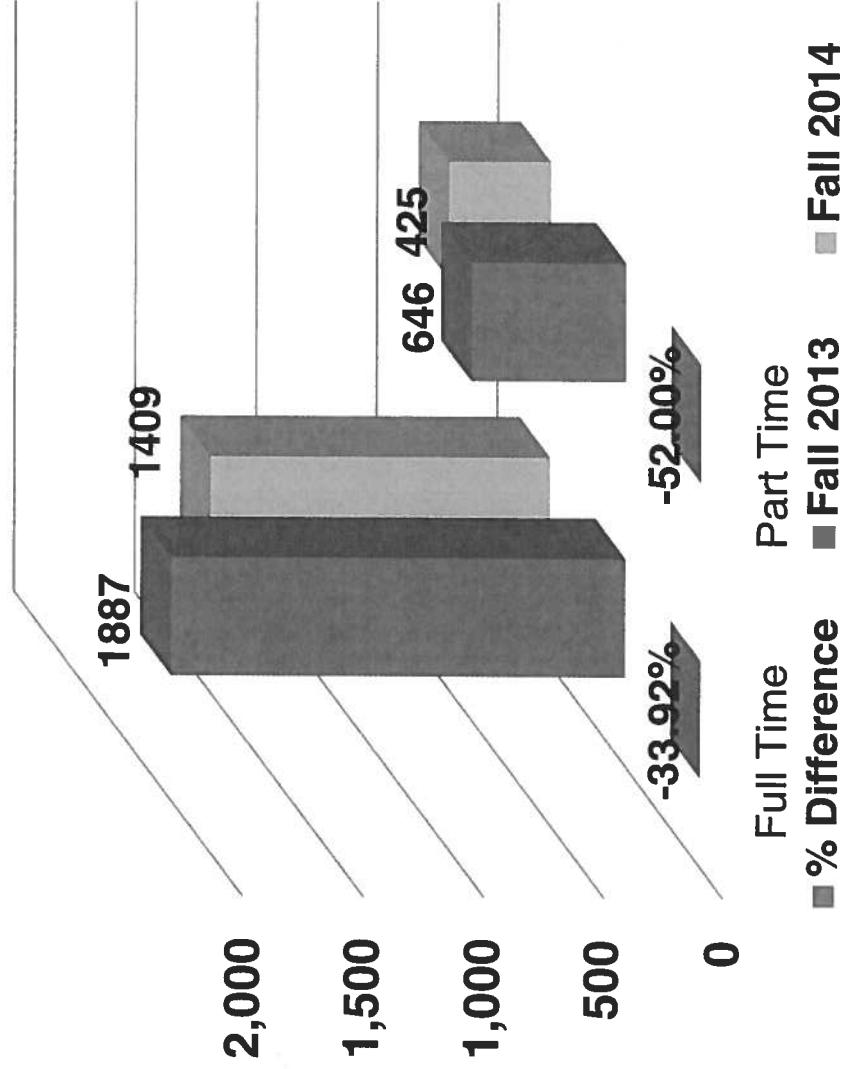
Dual Credit – High School Students

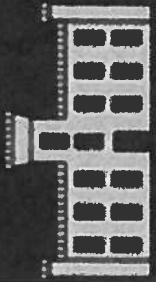




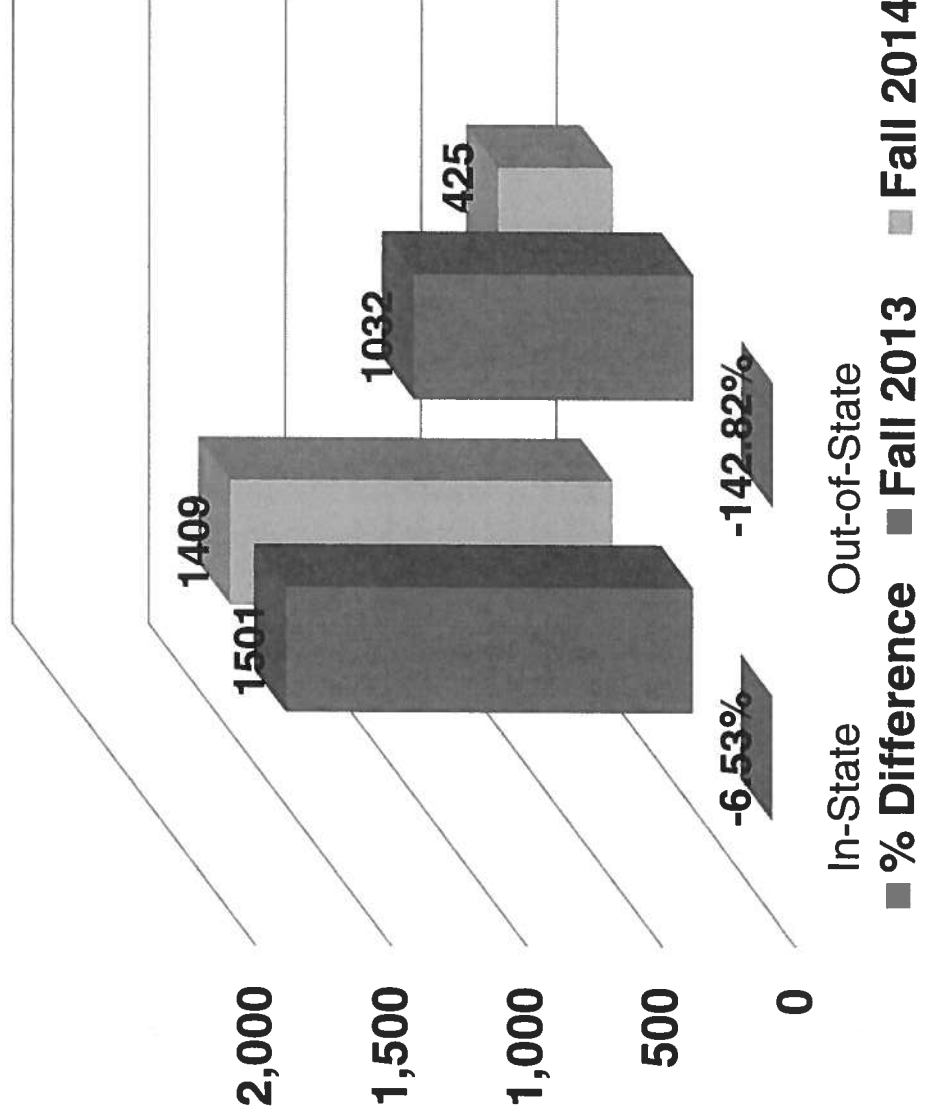
Fall 2013 to Fall 2014

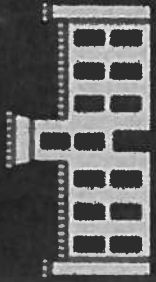
Full-time Vs Part-time





Fall 2013 to Fall 2014 Residency Status

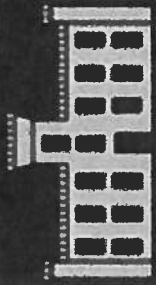




KENTUCKY STATE UNIVERSITY

First-time, Undergraduate, Degree Seeking Freshman by Residency

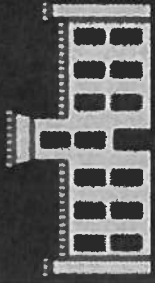
	Fall	Fall	Fall	One Year Change
	2012	2013	2014	
In-State	110	214	155	-28%
Out-of-state	213	323	192	-41%
Total	323	537	347	-35%



KENTUCKY STATE UNIVERSITY

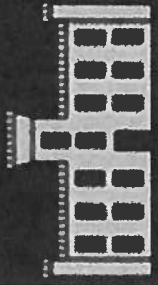
First-time, Undergraduate, Degree Seeking Freshman Top Five Kentucky Counties

	2012 Fall	2013 Fall	2014	One Year Change
Fall				
Jefferson	53	85	49	-42%
Franklin	20	28	13	-54%
Fayette	19	14	12	-14%
Anderson	2	13	11	-15%
Shelby	3	5	11	120%



First-time, Undergraduate, Degree Seeking Freshman Top Five Non-Kentucky States

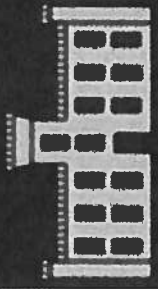
	2012 Fall	2013 Fall	2014	One Year Change
Ohio	57	83	45	-46%
Illinois	45	86	39	-55%
Michigan	38	58	38	-34%
Indiana	31	41	29	-29%
Georgia	7	11	10	N/A



KENTUCKY STATE UNIVERSITY

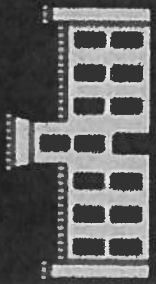
First-time, Graduate, Degree Seeking

	Fall 2012	Fall 2013	Fall 2014	One Year Change
Total	68	46	52	13%



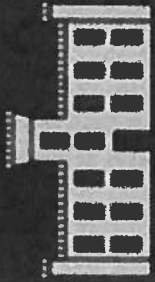
Dual Enrolled / High School Students

	Fall	Fall	Fall	Fall	One Year Change
	2011	2012	2013	2014	
Total	23	131	214	101	-53%



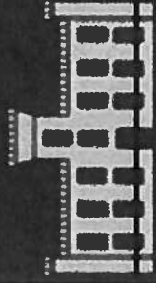
First-time, Transfer Students

					One Year Change
	Fall	Fall	Fall	Fall	
	2011	2012	2013	2014	
Total	115	179	173	165	-5%



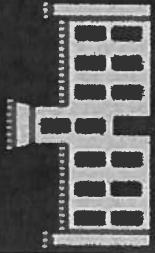
Total Enrollment

	Fall	Fall	Fall	Fall	One Year Change
	2011	2012	2013	2014	
Undergraduate	2490	2296	2370	1695	-28%
Graduate	256	228	163	139	-15%
Total	2746	2524	2533	1834	-28%



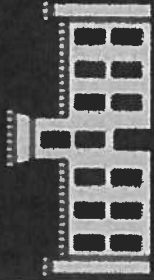
Causes for Enrollment Shortfall

- No Matriculation or Enrollment Deposit Requirement
- Negative press regionally/nationally as a result of more stringent student payment plans in spring 2014
- Process challenges in transfer recruitment area
- Students inability to pay (unmet financial need)
- Need to revise tuition structure for destiny/legacy areas
- Process challenges during transfer of graduate admissions from Academic Affairs to SSEM



KENTUCKY STATE UNIVERSITY

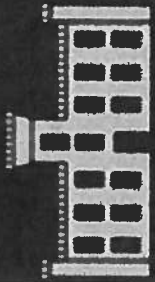
Observations from Fall 2014 Registration Process



Registration:

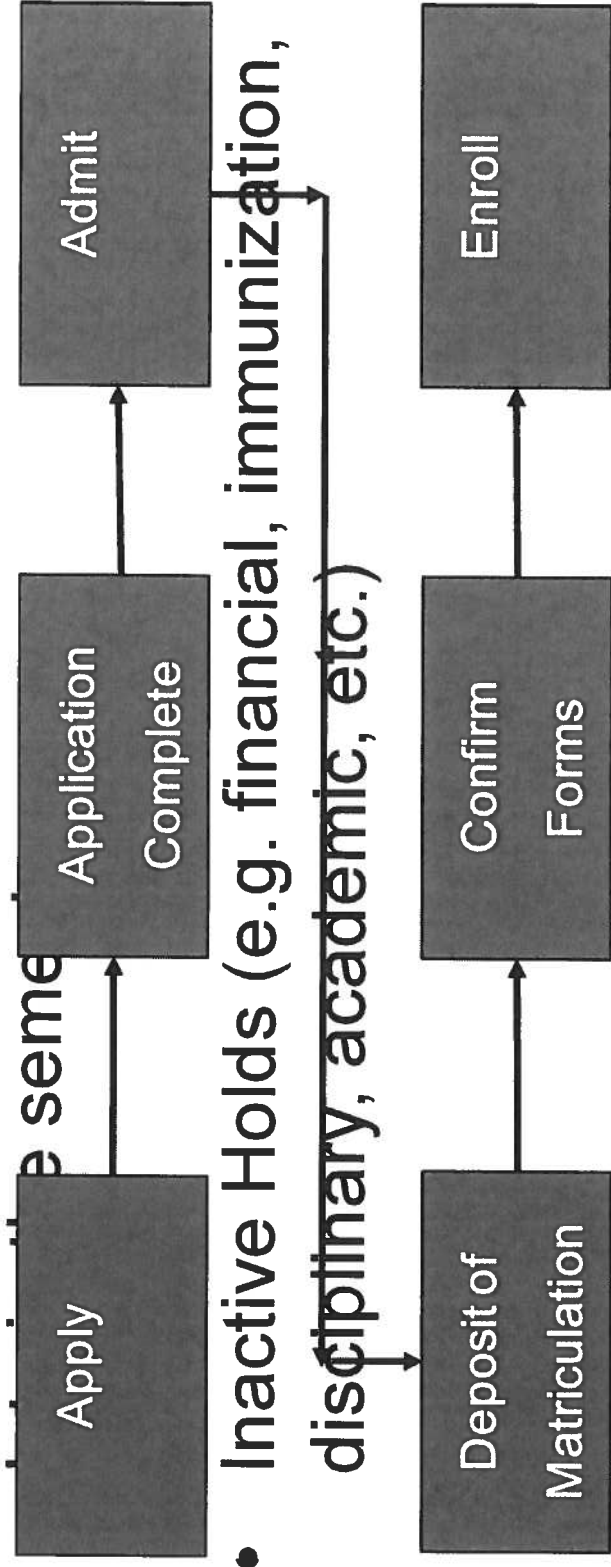
Opportunities for Improvement

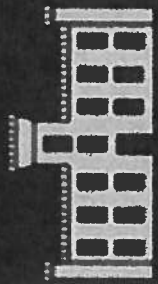
- The process to dis-enroll students occurs too late in the semester.
- No Single Integrated Process for Determining Which Students are Here
- Registration Inadequate for Current Day
- Inactive Holds (e.g. Incomplete Immunization, Better Documentation for Students and disAdministrators of WHERE etc) Each Student is in Process
 - More Flags of Bottlenecks, Process Step Breakdowns & Validations
 - Complete Audit Trail of Each Student from Initial Inquiry through Graduation



Student Registration Process Overview

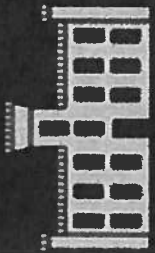
- The process to dis-enroll students occurs too





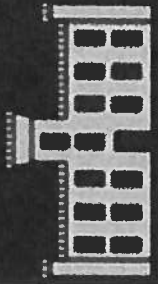
Registration Improvement Plan

What	Who	When
1 Form Improvement Team	Enrollment Services, IT, Finance, Academic Affairs, Strategic Planning	Completed 9/8/14
2 Review & Document Current Processes. Measure Success Rates	Enrollment Services, IT, Finance, Academic Affairs, Strategic Planning	By 9/29/14
3 Research Best Practices. Develop Improved Workflow Plan	Enrollment Services, IT, Finance, Academic Affairs, Strategic Planning	By 10/20/14
4 Implement Improved Workflow Plan a. Recruit—Application Complete b. Admit – Confirmation c. Enrollment	Enrollment Services, IT, Finance, Academic Affairs, Strategic Planning	a. End of Q4 2014 b. End of Q1 2015 c. End of Q2 2015

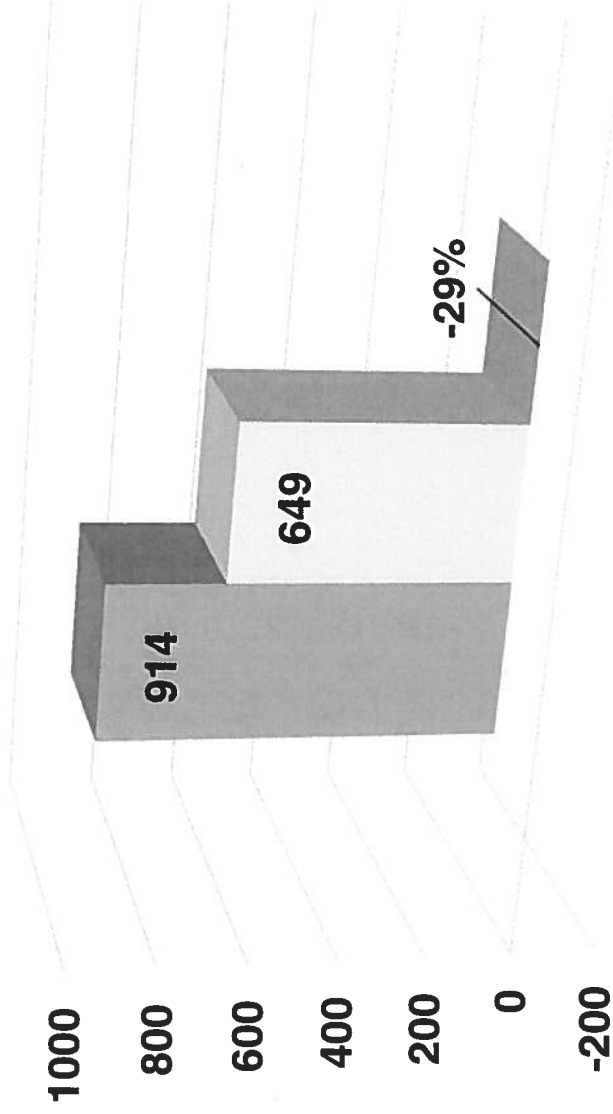


KENTUCKY STATE UNIVERSITY

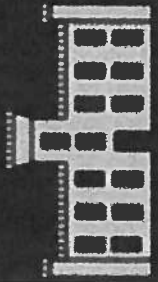
Residence Hall Occupancy Report



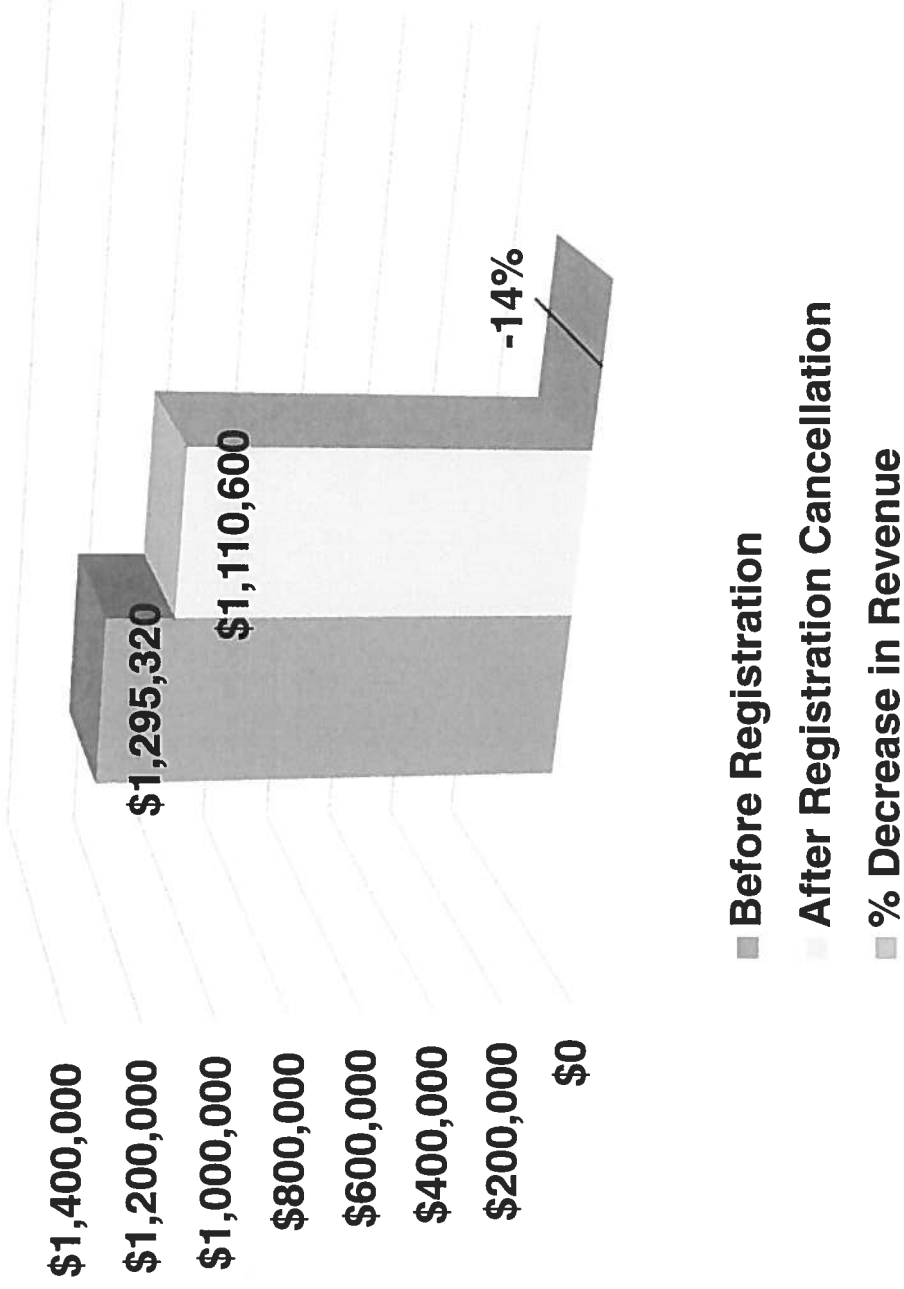
Fall 2013 vs Fall 2014 Residence Hall Overall Occupancy After Drop

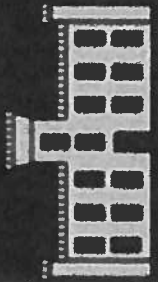


■ Fall 2013 Students ■ Fall 2014 Students ■ % Decrease in Occupancy

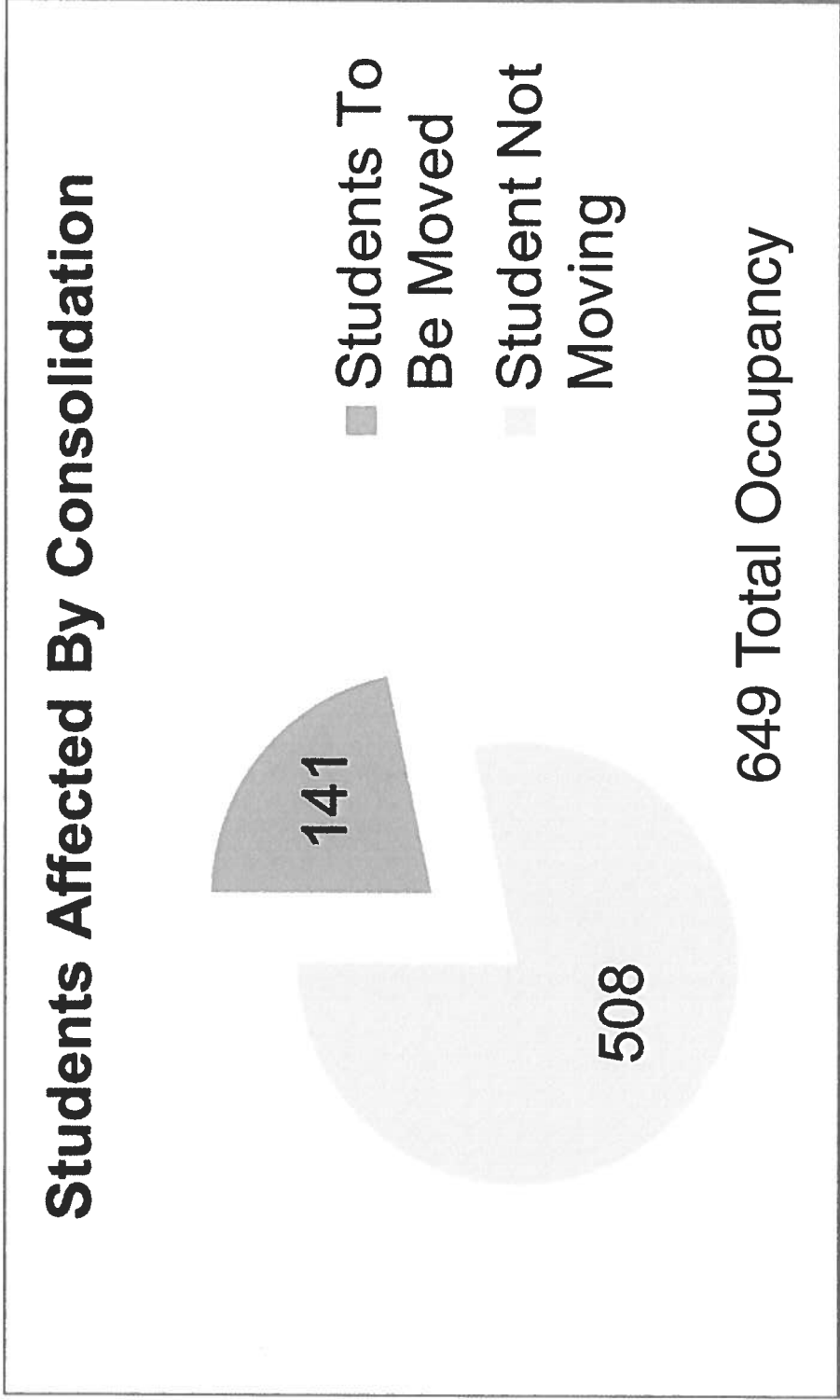


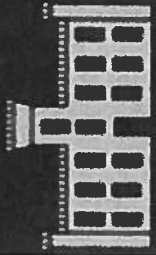
Residence Hall Revenue Impact





Residence Hall Occupancy Updates





KENTUCKY STATE UNIVERSITY

Student Success and Enrollment Management (SSEM) Update

Board of Regents Meeting

September 12, 2014