



# *Founder's Day* CONVOCATION

*Enabling an Intended Future for KSU*

---

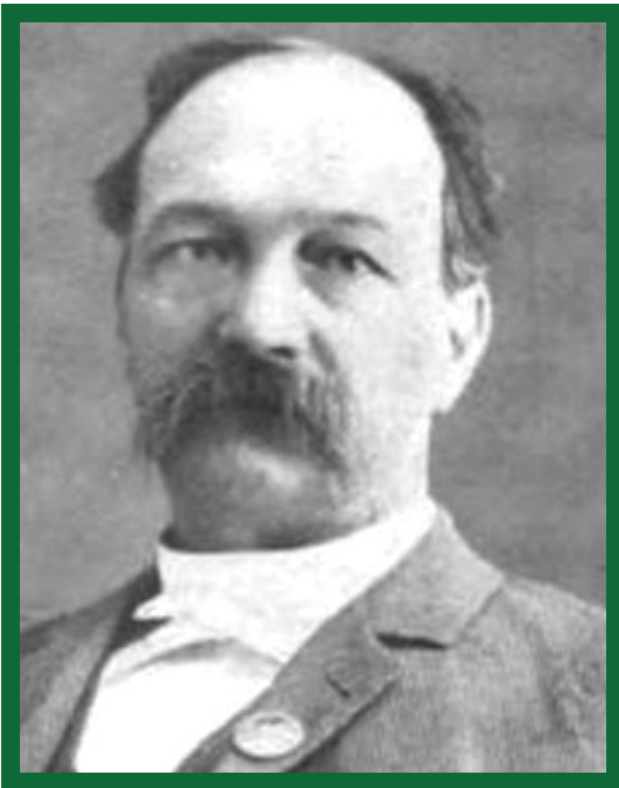
FRIDAY, OCTOBER 14, 2022 | 10 A.M.  
KENTUCKY STATE UNIVERSITY  
DAVID H. BRADFORD HALL, CARL H. SMITH AUDITORIUM





# KENTUCKY STATE UNIVERSITY

## *Founded 1886*



EDGAR ENOCH HUME  
1875 – 1877  
State Representative



JOHN HENRY JACKSON  
1886 – 1898  
First President





# *Accreditation and Affiliations*

KENTUCKY STATE UNIVERSITY is accredited by the Southern Association of Colleges and Schools Commission on Colleges (SACSCOC) to award the associate, bachelor's, master's and the Doctor of Nursing Practice degrees. You may contact the SACSCOC via mail at 1866 Southern Lane, Decatur, Georgia 30033-4097 or via phone at (404) 679-4501.

The University also holds accreditation with the Council for the Accreditation of Educator Preparation, the Academy of Nutrition and Dietetics, the Accreditation Commission for Education in Nursing, the National Association of Schools of Music, the National Association of Industrial Technology, the American Association of Family and Consumer Sciences, the Accreditation Council for Business Schools and Programs, and the Council on Social Work Education.





# Mission Statement

KENTUCKY STATE UNIVERSITY is a public, comprehensive, historically Black land-grant university committed to advancing the Commonwealth of Kentucky, enhancing society, and impacting individuals by providing quality teaching with a foundation in liberal studies, scholarly research, and public service to enable productive lives within the diverse global economy.

## Then & Now

FOUNDED IN MAY 1886, Kentucky State University formally opened on October 11, 1887.

1886	2022
<b>President</b> John Henry Jackson	<b>Interim President</b> Dr. Ronald A. Johnson
<b>55</b> Students Enrolled	<b>1,818</b> Students Enrolled
<b>3</b> Instructors	<b>157</b> Instructors
<b>13 to 1</b> Student-to-Faculty Ratio	<b>14 to 1</b> Student-to-Faculty Ratio
<b>24</b> Acres	<b>914</b> Acres
<b>1</b> Diploma Offered: Normal School Certificate of Completion	<b>60</b> degree programs: associate (two-year) degrees in two disciplines, baccalaureate (four-year) degrees in 20 disciplines, master's degrees in five disciplines, and a doctoral degree in nursing practice





## *Board of Regents*

DR. GERALD PATTON, CHAIR  
DR. HERMAN WALSTON, VICE CHAIR, FACULTY REGENT

MR. MICHAEL ADAMS JR.  
MS. TAMMI DUKES  
MR. EDWARD FIELDS, STAFF REGENT  
MR. ERNIE FLETCHER  
ATTORNEY EDWARD HATCHETT  
MR. JASON MOSELEY  
DR. CHARLES MOYER  
MR. ROBERT RAMSEY  
MR. SAVION BRIGGS, STUDENT REGENT

## *Institutional Officers*

DR. RONALD A. JOHNSON – INTERIM PRESIDENT  
  
DR. DAAREL BURNETTE – Interim Chief of Staff  
DR. LEROY HAMILTON – Provost and Vice President for Academic Affairs  
DR. CLARA ROSS STAMPS – Senior Vice President for Brand Identity and University Relations  
DR. BRIDGETTE GOLMAN – Interim Vice President for Student Engagement and Campus Life  
DR. GERALD SHIELDS – Interim Vice President for Finance and Administration  
ATTORNEY LISA K. LANG – General Counsel and Records Custodian





# *Presidential Symbols of Office*



## UNIVERSITY MACE

The mace is a club-shaped staff used as a symbol of authority. It was originally a weapon of the Middle Ages with a long handle, heavily weighted on the end. The heavy end became an iron ball as the sciences of war developed, and archers and other unmounted warriors used the mace as a hand arm. The mace was also used as a symbol of authority by some church officials, the British House of Commons, and the United States House of Representatives. Sergeants at arms, who were the guards of kings and other high officials, also carried maces. Even today, a gleaming white mace still rests on the table at meetings of the Northwest Territories Council, symbolizing royal and legislative authority. Gradually, the mace gained a ceremonial character and today it is used during inaugurations, commencements and other formal processions.

## RECTOR'S REGALIA

The Tower of London houses the royal jewel office. Here the crowns, scepters, and other royal treasures of the English rulers, known as the regalia, are closely guarded. Since modern academic regalia evolved from the kinds of apparel worn by monks and students in the Middle Ages to keep warm in the castles and halls in which they studied, academic regalia remains symbolic of scholastic achievement. The regalia worn by Kentucky State University's interim president, Dr. Ronald A. Johnson, is made of black tropical wool. It has blue velvet panels and black bars. The bars and panels are accented by cardinal red cording. Each sleeve has three garter bars. The sleeves are black and reach the wrist. The hood is lined with cardinal red and bound with dark blue velvet.

## CHAIN OF OFFICE

Each president of Kentucky State University wears the Chain of Office, also referred to as the livery and/or the presidential medallion, symbolizing the Office of the President. It is worn at formal academic occasions such as inaugurations, commencements, convocations, and Founder's Day. The acting president of Kentucky State University's Chain of Office comprises a 3" diameter bronze medal with green enamel set in a tulip bezel. It is attached with a leaf banner bearing the title president and leaf clusters. The chain consists of curved banners depicting engravings of the names of all the official presidents of Kentucky State University and their year of appointment.





# *List of Presidents*



JOHN HENRY JACKSON  
1886 – 1898

JAMES EDWARD GIVENS  
1898 – 1900

JAMES SHELTON HATHAWAY  
1900 – 1907

JOHN HENRY JACKSON  
1907 – 1910

JAMES SHELTON HATHAWAY  
1910 – 1912

GREEN PINCKNEY RUSSELL  
1912 – 1923

FRANCIS MARION WOOD  
1923 – 1924

GREEN PINCKNEY RUSSELL  
1924 – 1929

RUFUS B. ATWOOD  
1929 – 1962

CARL MCCLELLAN HILL  
1962 – 1975

WILLIAM A. BUTTS  
1975 – 1982

RAYMOND M. BURSE  
1982 – 1989

JOHN T. WOLFE, JR.  
1990 – 1991

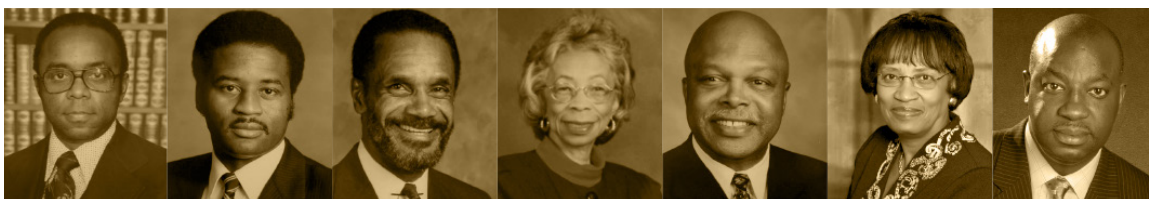
MARY L. SMITH  
1991 – 1998

GEORGE W. REID  
1998 – 2002

MARY EVANS SIAS  
2004 – 2014

RAYMOND M. BURSE  
2014 – 2016

M. CHRISTOPHER BROWN II  
2017 – 2021







# KENTUCKY STATE UNIVERSITY

## *History*

From its modest beginnings as a small normal school for the training of African American teachers, Kentucky State University has grown into a land-grant and liberal arts institution that prepares a diverse student population to compete in a multifaceted, ever-changing global society.

Kentucky State University began as an idea on October 15, 1885. The Commonwealth needed more normal schools to train African American teachers for employment in its Black elementary schools. On May 18, 1886, legislators authorized the school's creation, and the university was chartered as the State Normal School for Colored Persons, the second state-supported institution of higher learning in Kentucky.

During the euphoria of Frankfort's 1886 centennial celebration, when vivid recollections of the Civil War remained, the city's 4,000 residents were keenly interested in having the new institution located in Frankfort. Toward that end, the city donated \$1,500, a considerable amount in 1886 dollars, and a site on a scenic bluff overlooking the town. This united display of community enthusiasm and commitment secured the new college's place in Frankfort despite competition from several other cities.

Recitation Hall—now Jackson Hall—the college's first building, was erected in 1887. The new school opened on October 11, 1887, with three teachers, 55 students and John Henry Jackson as its first president.

Kentucky State became a land-grant college in 1890, and the departments of home economics, agriculture and mechanics were added to the school's curriculum. The school produced its first graduating class of five students in the spring of that year.

As the school began to grow and change, so too did its moniker. In 1902, the name was changed to Kentucky Normal and Industrial Institute for Colored Persons. The name was changed again in 1926 to Kentucky State Industrial College for Colored Persons.

By 1929, most students had access to high school, leading then-President Rufus B. Atwood to discontinue the college's high school, which had been in operation since 1893.

Even so, Atwood's 33-year tenure was marked by dramatic institutional growth including the first modern yearbook, the first student newspaper, and most notably, by gaining accreditation for the institution. His administrative acuity and political acumen were necessary to position the university for growth during a period of marked social change, while avoiding fallout in the political town of Frankfort.

In 1938, the school was named Kentucky State College for Negroes and began focusing again on offering more traditional liberal arts education. The college notably gained full accreditation from the Southern Association of Colleges and Schools the following year.

The term "for Negroes" was dropped in 1952 when the school's name became merely Kentucky State College. In 1972, it became Kentucky State University and enrolled its first graduate students in the School of Public Affairs in 1973.

In the 45 years since then, more than 43 new structures or major building expansions have enhanced Kentucky State University's 914-acre campus, which includes a 311-acre agricultural research farm and a 306-acre environmental education center.

Kentucky State University, "The College on the Hill," is led by Interim President Dr. Ronald A. Johnson. It is a public institution with an enrollment of approximately 2,000 students and 157 full-time faculty members. The university's diverse mix of faculty, staff, and students has made Kentucky State the most diverse public institution in the Commonwealth, and among the most diverse nationwide.





## *Notable Historical Events*

**1886** State Normal School for Colored Persons established by an act of the Kentucky General Assembly with Berea College alumnus John Henry Jackson elected as president. Jackson was the first president of the Kentucky Negro Education Association (KNEA), the representative body for Kentucky's Black teachers and a lobbying group for educational issues.

**1887** Constructed at a cost of \$7,000, Recitation Hall—now named Jackson Hall in honor of the school's first president—was the first and now-oldest building on campus. Classes began there on October 11, with three teachers and 55 students enrolled.

**1890** State Normal School for Colored Persons became a land-grant college and over the next seven years the departments of home economics, agriculture, mechanics were established. The school's first class of five students were graduated the same year.

**1893** A high school was established.

**1898** James Edward Givens becomes the school's second president. A Greenwood, Virginia native, Givens was a graduate of Harvard University. His presidency was marked by a significant increase in the school's land holdings, including the purchase of adjoining farmland, which would prove critical in the future.

**1900** James Shelton Hathaway becomes the school's third president. A former schoolteacher and newspaper publisher, Hathaway earned both A.B. and A.M. degrees from Berea College, and an M.D. from Louisville National Medical College. His presidency was marked by significant academic progress and facility improvement at the institution.

**1902** Name was changed to Kentucky Normal and Industrial Institute.

**1907** John Henry Jackson returns as president. During his second term as president, the physical plant was enlarged tenfold and additional land purchases were requested.

**1908** Hume Hall was built and named in honor of Edgar Enoch Hume, a physician, legislator from Anderson County, Kentucky, and mayor of Frankfort, whose service to the school included political support of its founding and board of trustee service on the school's board for 17 years.

**1909** Paul William Lawrence Jones established a football team, which began the school's first intercollegiate athletics. Born in 1878 at Mt. Sterling, Kentucky, Jones' more than two-decade-long career at the school began in 1907; he later became a professor of history and academic dean at the school. Having earned the nickname of "Paul" from classmates because of his early love of history and interest in John Paul Jones, he was a 1898 graduate of Kentucky Normal School for Colored Persons, where along with teaching and administrative duties, he also helped form and served as coach and manager of early baseball, football, and track teams at the school, which earned him the title of "Father of Athletics."

**1910** James Shelton Hathaway returns as president.



— *Notable Events Continued*

**1912** Green Pinckney Russell becomes the school's sixth president. Born in Logan County, Kentucky and educated at Berea College (A.B.; A.M.) and at Wilberforce University (LL.D.), Russell was the first licensed African American teacher in Lexington, Kentucky—where Russell Elementary School was named in his honor. During this tenure, the institution matured from a vocational school offering secondary education to a four-year college and gained modern fiscal support from the state legislature due to Russell's pursuance of larger instructional programs.

**1923** Francis Marion Wood becomes the school's seventh president. Having taught in various Black schools in Kentucky, Wood worked as principal of Western High School in Paris, Kentucky 12 years before assuming the presidency of his alma mater. A 1901 graduate of the Normal School for Colored Persons where he received his B. PED, Wood later received an A.M. from the Hampton Institute. As the first and only alumnus to become president of Kentucky State University, he is credited with moving the school toward true collegiate status.

**1924** Green Pinckney Russell returns as president.

**1929** Rufus Ballard Atwood becomes the school's ninth president. A Kentucky native, Atwood entered Fisk University in 1915 before enlisting in World War I, gallantly serving with the Signal Corps of the all-Black 92nd Division and being awarded the Bronze Star for bravery the day before the Armistice. Following his graduation from Fisk in 1920 with a bachelor's degree in biology, Atwood earned another undergraduate degree at Iowa State Agriculture and Mechanical College—now Iowa State University—in 1923. The same year, he accepted a position as professor of agriculture at Prairie View State Normal and Industrial College in Texas—now Prairie View A&M University—before accepting the presidency of Kentucky State College for Colored Persons at just 32 years old. His presidential tenure was marked by transforming the school into a college beyond name only. Having set high standards, Atwood secured the college's accreditation after a mere two years at its helm. In addition to securing campus improvements through the New Deal's Public Works Administration and the Julius Rosenwald Fund, Atwood continued his leadership to enhance both the intellectual and physical environment of Kentucky's only publicly-funded Black college throughout his 33-year career as president.

School awards its first Bachelor of Arts degrees.

Kentucky Hall is constructed.

**1929** Leoda Lynn of Paducah, Kentucky becomes the first Miss Kentucky State. Born in Paducah, where she graduated from Lincoln High School, Lynn was a sophomore in college when her boyfriend and future husband, William Goodwin, encouraged her to enter the new popularity contest that was being held on campus. Goodwin represented her boyfriend's club, A.P.B., a fraternity. After her marriage, Goodwin returned to college and earned her B.A. in mathematics from Kentucky State and her M.A. in education from the University of Kentucky. She was a math teacher at old Dunbar High School and Bryan Station High School in Lexington, Kentucky.



— *Notable Events Continued*



**1930s** The decade was marked by the establishment of Black Greek-Letter fraternities and sororities on Kentucky State's campus. The Beta Zeta Chapter of Alpha Kappa Alpha Sorority, Inc. was chartered on February 25, 1933. The Beta Mu Chapter of Alpha Phi Alpha Fraternity, Inc. was chartered on April 28, 1933. The Alpha Pi Chapter of Delta Sigma Theta Sorority, Inc. was chartered on April 30, 1934. The Psi Psi Chapter of Omega Psi Phi Fraternity, Inc. was chartered on November 9, 1934. The Xi Lambda Chapter of Phi Beta Sigma Fraternity, Inc. was chartered on February 13, 1935. The Alpha Upsilon Chapter of Kappa Alpha Psi Fraternity, Inc. was chartered on March 1, 1935. The Eta Alpha Chapter of Zeta Phi Beta Sorority, Inc. was chartered on April 20, 1935.

**1931** School is approved as an "A" class negro college by the Southern Association of Colleges and Schools.

**1934, 1935 & 1937** School's football teams were national champions.

**1938** School's name is changed to Kentucky State College for Negroes.

**1948** McCullin Hall built and named in honor of the memory of Lt. James McCullin, a Kentucky State graduate of the class of 1942. An Air Medal and Purple Heart recipient, Lt. McCullin, a Tuskegee Airman in the famous 99 Fighter Squadron, was killed in action over Sicily in 1943—making him the first Kentucky State WWII graduate killed in WW2, and one of two of the first Black pilots ever to be killed in combat. His aircraft nor remains were found.

**1952** School's name is changed to Kentucky State College. George Washington Carver Hall is constructed.

**1954** Geraldine Ogden becomes the first white student to enroll at Kentucky State College on October 31.

**1958** Kentucky State College becomes a full member of the Southern Association of Colleges and Schools.

**1960** Students sit-in. Paul G. Blazer Library constructed.

**1962** Carl McClellan Hill becomes the college's 10th president. A nationally-renowned chemistry scholar, Hill received his B.S. from Hampton Institute, an M.S. and a Ph.D. from Cornell University, an I.L.D. from the University of Kentucky and an LL.D. from the University of Louisville. His tenure was marked by the college being raised to university status. The following year the first graduate students enrolled in Kentucky State University's School of Public Affairs. The addition of four undergraduate departments, a graduate school, and a special African American collection to the library occurred during Hill's term as president. Also, major construction and additions to 12 major buildings on campus and the renovation of several others occurred during Hill's presidency.

**1964** The cross-country team wins the NCAA College Division II Championship under the leadership of William Exum.

**1965** Bradford Hall is constructed. Named in honor of David H. Bradford, who served Kentucky State as a member of the college faculty, head of the Department of History and Political Science, college registrar, and dean of instruction over the course of 33 years.



— *Notable Events Continued*

**1966** The Special Services and Upward Bound programs begin at Kentucky State.

**1967** A two-year nursing program is established.

**1969 - 1970** The Memorial Athletic Complex is constructed and the Jones Field House is added to it the following year.

**1970 - 1972** The men's basketball team three-peat the NAIA championship.

**1971** The Carl M. Hill Student Center is constructed.

**1972** Kentucky State College is raised to university status and an Air Force Reserve Officers Training Corp unit begins.

**1975** William A. Butts becomes 11th president. A political scientist, Butts received several B.S. degrees from Mississippi Valley State University, an M.A. and a Ph.D. from Southern Illinois University, and an LL.D. degree from Morehead State University and from Daniel Payne College. His tenure was marked by several major campus facility enhancement projects and the construction of a new academic administration building.

**1979** Alumni Stadium is constructed.

**1980 - 1981** Alumni defend Kentucky State University from criticism, ward off attempts to close institution. They stage a peaceful protest march on the state Capitol. Kentucky State University enhancement plan developed.

**1981** The Kentucky State College women's basketball team wins the first NAIA women's basketball title in 1981. The team defeated Texas Southern 73-67 for the championship in Kansas City, Missouri. The team members included Carolyn Walker, the tournament's most valuable player and was named first team All-Tournament, Pam King, who was named second team All-Tournament; and Angelia Barnett was named second team All-Tournament. Other team members included Paula Jennels, Felicia Jordan, Darlene Brown and Rhonda Beauford. The team was initially coached by Cornieth Y. Russell, then replaced by Ron Mitchell, who was also the school's athletic director, who was named NAIA Coach of the Year after the tournament.

**1982** Raymond A. Burse becomes 12th president. A native of Hopkinsville, Kentucky, Burse received a bachelor's degree in chemistry and math from Centre College and a law degree from Harvard University. His tenure was marked by record enrollment, more than \$60 million in capital improvements, and significant enhancements in the academic and financial operations of the institution, including the establishment of the Whitney M. Young Jr. College of Leadership Studies.

**1983** Whitney M. Young Jr. College of Leadership Studies opened.

**1986** The University celebrated its centennial anniversary and purchased the Research and Demonstration Farm.



— *Notable Events Continued*



**1990** John T. Wolfe Jr. becomes 13th president. Wolfe received a bachelor's degree in English education from Chicago State University, a master's degree in English education and a doctoral degree in linguistics from Purdue University. His tenure was marked by strong support of the Paul G. Blazer Library and was responsible for significantly increasing the number of library starting positions at the school.

**1991** Mary L. Smith becomes 14th president and first woman president and had most immediately served as Kentucky State University's vice-president for academic affairs. Smith completed her graduate study at the University of Kentucky, where she earned a Master of Arts and a Doctor of Education degree in curriculum and instruction. Her tenure was marked by the initial accreditation of the master's in public administration. She spearheaded the establishment of the Center of Excellence for the Study of Kentucky African Americans, which identifies, collects, preserves, and disseminates information and materials about notable Kentucky African Americans and the African American heritage and experience.

**1992** William Exum Athletic Center built. Born in Illinois, William Exum was the first African American varsity football player at the University of Wisconsin, where he was both an outstanding track star and student and completed his bachelor's, master's and doctorate degrees. In 1949, Exum was hired as head of the Kentucky State's physical education department and later was made head of the athletics department, sometimes coaching various sports teams. In addition to coaching the Kentucky State men's cross country team to an NCAA Division II championship in 1964, he was the manager of the United States Track and Field teams at the 1972 and 1976 Olympics. Inducted into the National Association of College Directors of Athletics Hall of Fame in 1978, Exum retired from Kentucky State in 1980.

**1993** Cooperative Extension Building built. This 25,000 square foot building houses five conference rooms and a demonstration kitchen with satellite downlink capabilities, video production and print studios, and 27 offices.

**1998** George W. Reid becomes 15th president. During his tenure as president, the Council on Postsecondary Education approved the creation of Kentucky State University's first program of distinction, an honor that was given to the aquaculture program. A new master's degree program in that area, entitled aquaculture/aquatic sciences, was also approved by CPE.

Whitney M. Young Jr. statue erected at the front entrance of campus. A native of Shelbyville, Kentucky, Whitney Moore Young Jr. was an American civil rights leader. He spent most of his career working to end employment discrimination in the United States and turning the National Urban League from a relatively passive civil rights organization into one that aggressively worked for equitable access to socioeconomic opportunity for the historically disenfranchised. The sculptor of the statue is another Kentucky State alumnus and fellow member of the Alpha Phi Alpha Fraternity, Ed Hamilton, who is best known for his statue, Spirit of Freedom, an African American Civil War Memorial in Washington, D.C. Hamilton says that he was familiar with Young's role in the struggle for civil rights and was honored to be able to bring Young back to life and return him to the Kentucky State campus. He wanted to show Young in an attitude of welcome, which is why he sculpted Young with his hand extended.

**1998 & 2000** Kentucky State's golf teams won the National Minority Intercollegiate Golf Championship.







— *Notable Events Continued*

**1999** Aquaculture became Kentucky State's program of distinction. Initiated in the mid-1980s, the Division of Aquaculture was originally exclusively dedicated to research and extension activities. Expanded via experimental course offerings, and later with an undergraduate minor in aquaculture/aquatic science, the Council on Postsecondary Education approved Kentucky State University to offer a Master of Science degree in aquaculture/aquatic science in 1999. The program addresses all three of the traditional land-grant university roles: research, teaching, and extension. The division has class offerings over the full spectrum of aquaculture, including reproduction, nutrition, water quality, physiology, production systems, economics and marketing, and fish disease.

Chappell Building built, named in honor of Roy M. Chappell. A Tuskegee Airman, Chappell was born in Williamsburg, Kentucky. Chappell attended Kentucky State College, where he majored in chemistry before leaving his junior year to join the service during World War II. His aviation career began when he was a volunteer with the 477th Bombardment Group, and he later served at Godman Field at Fort Knox, Kentucky. He participated in the Freedman Field Mutiny when 104 African American officers protested for equal treatment in the military. After his military service, Chappell settled in Chicago, graduated from Roosevelt College—now Roosevelt University—and taught elementary school for 30 years.

**2004** Mary Evans Sias becomes 16th president. A native of Jackson, Mississippi, Sias graduated cum laude from Tougaloo College, and earned her Master of Science degree and Ph.D. in sociology from the University of Wisconsin at Madison. She also holds an M.B.A. degree in management from Abilene Christian College of Dallas. Sias' tenure as president was marked by strong support of salary adjustments for faculty and staff, increased funding for the school and the launch of its first capital campaign. Kentucky State also experienced new program development, including new graduate programs in business administration, environmental studies, computer science technology and special education.

**2005** Kentucky State purchased 320 acres in Henry County for its Environmental Education Center.

**2007** The School of Education introduced the Master of Special Education, Kentucky State's first completely online academic program.

**2008** The new Whitney M. Young Jr. Residence Hall was built. The former Young Hall was renamed The Halls.

**2009** Kentucky State's university-wide accreditation reaffirmed by the Southern Association of Colleges and Schools.

**2010** School of Business accreditation reaffirmed.

Center for Sustainability of Farms and Families built.

**2011** College of Agriculture, Food Science and Sustainable Systems established. It is comprised of five departments: Agriculture & Natural Resources, Aquaculture, Environmental Studies & Sustainable Systems, Food & Animal Science, and Family & Consumer Science.



— *Notable Events Continued*



Groundbreaking held for the Dr. Henry E. Cheaney Legacy Plaza. Born in Henderson, Kentucky, Cheaney received his undergraduate degree from Kentucky State in 1936, his master's degree in history from the University of Michigan in 1941, and his Ph.D. in history from the University of Chicago in 1961. Cheaney was a leading authority on the history of African Americans in the Commonwealth, who retired from Kentucky State University following a 46-year career as a professor. Credited for establishing the university's African American history collection, his personal collection was used for the writing of the two-volume history of Blacks in Kentucky. A founding member of the Xi Lambda Chapter of Phi Beta Sigma Fraternity Incorporated at Kentucky State, Cheaney also served as boxing coach.

**2013** Rosenwald Center for Families and Children opened.

**2014** Raymond M. Burse becomes 17th president.

**2015** The university's 300-acre farm is named the Harold R. Benson Research and Demonstration Farm in honor of pioneering 1890 Land-Grant administrator Harold R. Benson. His 36-year career as the longest-tenured land-grant administrator began at Kentucky State in 1975. Added to these duties was direction of the Extension program from 1975 to 2011, and the research program from 1985 to 2011. Despite moving nine times, the once-dormant Land Grant Program was resurrected under his leadership. Benson also created the aquaculture research program, established the university's 300-acre research and demonstration farm, worked to renovate the historic Atwood building into the Atwood Research Facility, and directed efforts to build and design the Cooperative Extension Building. In the process of doing so, he revolutionized the agriculture research and education programs at Kentucky State University.

**2017** M. Christopher Brown II becomes 18th president. Brown earned a Ph.D. in higher education from The Pennsylvania State University, an M.S. in education from the University of Kentucky, and a B.S. in elementary education from South Carolina State University. Brown set a bold agenda to move Kentucky State University forward. Building its future on the four pillars of success—access, academics, agriculture and athletics—President Brown's priorities included accreditation and accountability, responding to a shifting marketplace, academic alignment for sustainability, and fiscal health and vitality. In keeping with this vision, Brown founded the Atwood Institute for Race, Education, and the Democratic Ideal; its work is a tripartite mission to honor diverse experiences, dismantle negative stereotypes, and train emergent leaders.

Kentucky State conferred its first doctoral degrees with the inaugural graduating class of Doctor of Nursing Practice (DNP).

**2018** The Presidential Green Ribbon Commission on Academic Prioritization and Budget Alignment conducted a comprehensive academic program review.

The Kentucky State University Board of Regents voted to approve the creation of The Center for Research on the Eradication of Education Disparities (C.R.E.E.D. Center) to explore solutions to close educational gaps through research, educator training and human engagement.







— *Notable Events Continued*

**2019** The University was a finalist for HBCU Digest's HBCU of the Year award and won the top awards for best Board.

The pedestrian walkway that crosses over East Main Street, connecting the north and south sides of campus, was completed and named the Mary E. Sias Pedestrian Walkway in honor of the service and leadership of the 16<sup>th</sup> president of Kentucky State University.

Thoroughbred fountain installed.

The Southern Association of Colleges and Schools Commission on Colleges (SACSCOC) reaffirmed Kentucky State University's accreditation for the next 10 years.

**2020** Quattro Cavalli statue installed.

Mary L. Smith Clock Tower installed.

In the very early stages of the COVID-19 pandemic, Kentucky State University established the COVID-19 Student Emergency Fund to assist students in need financially. Kentucky State also bridged the gap to accessing online courses by providing laptops, hotspots for internet service and access to online textbooks.

Kentucky State University rededicated the Rufus B. Atwood Agricultural Center after a \$7.5 million USDA facility grant program enabled renovations to include modern classrooms, labs, offices and ample seating for studying areas, as well as designated study rooms.

Kentucky State University became the first HBCU and only university in Kentucky to be nominated and awarded membership to the Council of Public Liberal Arts Colleges (COPLAC).

**2021** Students in the Kentucky State University Bachelor of Science in nursing program (BSN) earned a 100 percent pass rate on the National Council Licensure Examination (NCLEX). Five students in the BSN program have already been offered or accepted employment.

The first building constructed as part of Kentucky State University's campus received nearly \$500,000 in renovations as part of a recent Historically Black Colleges and Universities (HBCU) grant program, funded by the Historic Preservation Fund, and administered by the National Park Service (NPS), Department of Interior. Jackson Hall, formerly known as Recitation Hall, was the first and now-oldest building on the Kentucky State campus. Jackson Hall was constructed in 1887 for \$7,000.

**2022** On April 8, House Bill 250 (HB 250) was passed by the Kentucky General Assembly and signed by Governor Andy Beshear to support Kentucky State University. This legislative action secured KSU's place as a vital component of the Kentucky postsecondary educational ecosystem of comprehensive universities and schools.





## *Past Founder's Day Speakers*

- |  |  |
|--|--|
| 1977 – Dr. William A Brown (1959)            | 2002 – Mr. Jaques J. Wigginton (1986)            |
| 1978 – Dr. Henry Cheaney (1936)              | 2004 – Dr. Bailus Walker Jr. (1954)              |
| 1979 – Rev. Benjamin Baker                   | 2005 – Dr. James C. Letton (1955)                |
| 1980 – Dr. Carl M. Hill                      | 2006 – Mr. Patrick Beauchamp (1955)              |
| 1982 – Dr. Rufus Barfield (1952)             | 2007 – Mr. Lytle T. Davis (1955)                 |
| 1984 – Dr. Clifford Claiborne (1960)         | 2008 – Kimberly Reed Thompson, Esq. (1978)       |
| 1985 – Dr. Ivan Cotman (1962)                | 2009 – Dr. Cuttie Bacon III (1963)               |
| 1986 – Mr. Roy E. Bussell Jr. (1970)         | 2010 – Ms. Tish Norman (1995)                    |
| 1987 – Dr. Bessie M. Lasley-Rhodes (1956)    | 2011 – Dr. Earl Richardson                       |
| 1988 – Mrs. Brenda Blane (1967)              | 2012 – Brigadier General Henry L. Huntley (1983) |
| 1989 – Mr. Thomas P. Lewis (1959)            | 2013 – Rev. Zachary Royal (1982)                 |
| 1991 – Dr. Olivia Whyte Thomas (1972)        | 2014 – Mrs. Joann James (1986)                   |
| 1992 – Senator Gerald A. Neal (1967)         | 2015 – Judge Hubert Grimes (1975)                |
| 1993 – Patricia Russell-McCloud, Esq. (1968) | 2016 – Patricia Russell-McCloud, Esq. (1968)     |
| 1994 – Mr. Kenneth “Sam” Harp (1977)         | 2017 – Dr. M. Christopher Brown II               |
| 1995 – Dr. Herbert Ernest Olivera (1950)     | 2018 – Rev. Cuttie W. Bacon IV (1987)            |
| 1996 – Mr. Benjamin F. Shobe (1941)          | 2019 – Mr. Russell L. Drake                      |
| 1997 – Dr. Norman Maurice Rates (1947)       | 2020 – Combined with Commencement Convocation    |
| 1998 – Mr. Adrian L. Wallace                 | 2021 – Dr. Corey Hicks (1995)                    |
| 2000 – Dr. Gerald W. Patton (1969)           | 2022 – Dr. Karen Townsend (1985)                 |
| 2001 – Dr. Kevin W. Cosby                    |  |

Note: Parenthetical year represents graduating class.





## 2022 Keynote Speaker Biography



**DR. KAREN M.R. TOWNSEND** is the president and CEO of KTownsend Consulting, an award-winning organizational development and consulting firm providing expertise in leadership development, 21st-century diversity, and personal excellence.

Townsend is a thought leader who has educated professionals at every level and is well known for her approach to diversity education. Several of Townsend's scholarly articles in this area have been featured in local, regional, and national publications. Dr. Townsend is also a certified diversity consultant, having received her training from the National Multicultural Institute in Washington, D.C. Before launching her consulting practice, she worked for fifteen years as a higher education professional. At Ohio State University, she worked extensively in developing and implementing programs for minority students. Townsend was responsible for identifying and assisting hundreds of underrepresented students in the successful

transition from high school to college. She held a similar position at Wright State University.

Townsend is also the founder of About My Sisters—an organization “on a mission to empower one million women and girls!” For twenty-nine years, she has helped women to achieve “life balance” by assisting them in discovering their true passions so that they live and lead...confidently. In 2018, her annual empowerment conference—SISTER TO SISTER—celebrated its twenty-fifth anniversary and was recognized as one of the longest-running women's conferences in the United States. As an author and advocate for women, Townsend's book, “It All Started When I Stopped Using Lotion: One Woman's Journey from Chaos to Calm,” was inspired by her quest to find life balance and make time for selfcare. A highlight of her career (and life) was to be selected as one of sixteen people invited to an event sponsored by Oprah Winfrey, “Live the Life You Want,” broadcast worldwide earlier this year.

Townsend received her bachelor's degree in political science from Kentucky State University in 1985, her master's in humanities from The Ohio State University, and her doctorate in educational and organizational leadership from the University of Dayton. She is an active member of her community through engagement and social services organizations such as the Tabernacle Baptist Church (Dayton, Ohio) and Alpha Kappa Alpha Sorority, Incorporated (Beta Eta Omega). Townsend currently serves on the board of directors for the Dayton Boys and Girls Club, the Miami Valley Fair Housing Center and the Dayton Area Chamber of Commerce, the Diversity Advisory Council for the Dayton Business Journal, and the Community Advisory Board for the Dayton Daily News.





# 2022 Founder's Day Convocation

**DR. LEROY HAMILTON JR.**  
Provost and Vice President for Academic Affairs  
Presiding

## **GOLDEN CLASS AND ACADEMIC PROCESSIONAL**

*"War March of the Priests"*  
(from *Athalie* by *Flex Mendelssohn*)

**Mr. Gordon D. Ford Jr.**

Class of 2019  
Guest Organist

## **THE SUMMONS TO CONVOCATION**

**Dr. Keith McCutchen**

Associate Professor of  
Humanities and Performance

## **MUSICAL INTROIT**

## **ENTRANCE OF PRESIDUM PLATFORM**

**Mr. Gordon D. Ford Jr.**

## **WELCOME**

**Ms. Miana Wallace**

93rd Miss Kentucky State University

**Mr. Urias Kelly**

29th Mister Kentucky State University

## **THE OCCASION**

**Dr. Bridgett Golman**

Interim Vice President for  
Student Engagement and Campus Life

## **THE HERITAGE ANTHEM**

*"Lift Every Voice and Sing"*  
(by *James Weldon Johnson* and *John Rosamond Johnson*)

**Ms. Zania Tutwiler**

Music Major, Class of 2023

**Dr. Keith McCutchen**, Organist

## **INVOCATION**

**Reverend Dr. George Moore**

Class of 1972





— *Program Continued*

## THE THOROBRED OATH

**Mr. Savion Briggs**  
Student Government Association President  
Kentucky State University

As a member of the Kentucky State University family,  
I pledge to maintain honesty and integrity in my academic and personal life.  
I understand that cowardly or shameful acts violate our shared bond  
and undermine the community of trust and respect for which we are all stewards.  
I will remain loyal to the ideals learned at “The College on the Hill” toward the  
betterment of those who are around me and others who come after me.

## ALUMNI GREETINGS AND RECOGNITIONS

**Mr. Richard H. Graves**  
Class of 1981 and President of  
KSU National Alumni Association

## JUBILEE GRAND MARCH AND GOLDEN CLASS RESPONSE

**Mr. James H. Atkins**  
Class of 1972

## MUSICAL PERFORMANCE

**Mr. Edgar Lewis**  
Mental Health Counselor  
and Interventionist

## INTRODUCTION OF THE SPEAKER

**Mr. Barry Johnson**  
Class of 1994 and  
Vice President of the KSUNAA

## KEYNOTE SPEAKER

**Dr. Karen Townsend**  
Class of 1985  
President and CEO of  
KTownsend Consulting

## PRESIDENTIAL ADDRESS

**Dr. Ronald A. Johnson**  
Interim President  
Kentucky State University

## MUSICAL PERFORMANCE

**Mr. Edgar Lewis**

## THE ALMA MATER

**Mr. Mario J. Radford**  
Pastor, Growth Point Church  
Lexington, KY

## POSTLUDE

**Mr. Gordon D. Ford Jr.**





# Golden Class of 1972

*WILLIE ANDERSON	SHARON BROWN
CLARICE ARTHUR	NORMA BRUCE
JAMES ATKINS	GLORIA BRYANT
JOHN BAILEY	JAMES BRYANT
CARL BALDON	DONNA WOODS BUCHANAN
ELIZE BARKER	MELVIN BURROWS
TRUMAN BARTLESON	DOLORES BYNUM
*DOUGLAS BEAN	*LOUIS CARTER
TERRY BEARD	JANIS CARTER MILLER
THERESA SMITH BEATON	*AUDREY DELROE CASH
CYNTHIA BELL	NATALIE CATCHINGS
WILLIE BENFORD	CHARLES CAUDILL
BETTY BERGMANN	BETTY CHAPMAN
JANICE BILLINGSLEA	*PAMELA CLARK
*JAMES BLOUNT	MARGARET CLAY
SAUNDRA BOTTS	PHILLIP CLAY
WILLIAM BOWMAN	PEGGY CLEMENTS
WILL BOWMAN	MARY COLEMAN
FRANK BOYKIN	HAROLD COLEMAN
LORETTA KELLEY BRISTER	RUDOLPH COMICK
RICHARD BROUGHTON	RAYMOND COOK





— *Golden Class of 1972 Continued*

PAULA COOPER-SMITH	ARNITA HACKET GADSON
LOTTYE CORNELL	DAVID GARR
RONALD CRUDUP	WANDA GARR
EVETTA CRUMP	ELAINE GIBSON
GERALD DAPREMONT	HAROLD GIBSON
RHETA DAVIS	MARIA GOINS
SHERIAN DOCKERY	LARRY GOLDEN
TURAHN DORSEY	BOBBIE GREEN
BARRY DOUGLASS	NANCY HALE
PHYLLIS DRAKE	LORETTA HALL
JACQUELINE DURANT	THEODORE HAMILTON
PHYLLIS DUNLAP DUVALL	LILLIAN HARDAWAY
DEBORAH EDISON	GEORGE HARDAWAY
DELORES EDISON	*ANITA HAREWOOD
RONALD EUDELL	ARLIN HARROD
NANCY CAMPBELL EVANS	ARNITA HARCHETT
MARY TOMPKINS FIELDS	KENNETH HATCHETT
*MARGARETTE FINT	MINNETTA HATCHETT
SHERRY FORD	PATRICIA HATCHETT
PHILIP FOWLER	JAMES HERNDON
MARY MARTIN FRANKLIN	AMANDA HILL-DANDRIGE
BEVERLY FRANKLIN	JULIA HINES
EDWIN FREEMAN	WANDA HINES
JAMES FRELLIE	BRUCE HOBSON
PRISCILLA FULTON	WANDA HORNER



— *Golden Class of 1972 Continued*



WANDA HOWARD	*PHILIP MAHIN
SERVICE HURST	PATRICIA MATILLAR
HATTIE INGRAM	*DANA MATTISON
DWIGHT JACKSON	JOHNNIE McCASKILL
FRANK JACKSON	SANDRA McCLELLAN
MICHAEL JACKSON	LINDA MCCRITE
LARRY JAMES	MARY McDONALD
SHEILA JONES JAMES	OLLIE McDOWELL-BROWN
THOMAS JENKINS	CAROLYN McELROY
STEPHANIE JOHNSON	MIKE MCGUIRE
PENNY JOHNSON	WALTER MEAUX
MADGE JOHNSON	*KENNETH MEEKS
BARBARA JOHNSON	SHARON MEEKS
BEVERLY JOHNSON	SHIRLEY MELVIN
NATALIE JONES	EMMA MERITT
KATRINA JORDAN	RAYMOND MITCHELL
SHARON KELLY	PORTIA MORGAN
*VINSON KING	CLEMENTINE MORRIS
MICHAEL LANIER	TINA WATSON MORRIS
*JOHN LATTIMORE	*DONNA MORTON
MILDRED LEWIS	ROSS MOSLEY
CHARLES LITTLE	RONALD MURPHY
ROBERT LOVE	REGINALD NORRIS
VICKIE MAHIN	MELANIE NUNN







— *Golden Class of 1972 Continued*

RUTH O'BRIEN	GAIL RIDGEWAY
RODNEY O'CONNER	*MODENE RIVERS
LLOYD OWENS	BURNELL ROBINSON
LEE PADGETT	MAXINE ROBINSON-KONTOSIS
*RALPH PARDUE	CAROLYN HOLLYFIELD RODGERS
GILES PARTEE	*WILLIE RODGERS
JANET EVERETT PATTERSON	JAMES ROGERS
ALFRED PATTON	PHILIP ROGERS
HUBERT PAYTON	COUNCIL RUDOLPH
WILLIE PEALE	MYRTLE RUDOLPH
BERTHA PENDLETON	JOANN SAMUELS
GLENDA PEPPERS	PAULINE SEXTON
CHARLES PERRY	AUBREY KINZER SHORT
DIANNA POWELL	CECIL SIMS
DAVID POWELL	PAULA SILVER SMITH
MARLENE PRATER	*FLORA SMITH
VIOLA PRATER	LEVI SMITH
*SANDRA PUMPKIN	TAYLOR SMITH
*JAMES QUARLES	DAVID SORG
MARION QUINN	DEAN SORG
ABDULLAH IBEN QURAN	VINCENT SPARROW
MARCIA TAYLOR RAGLIN	*DAVID SPENCER
ROGER REYNOLDS	AUSTIN SPENCER
LYMAN RHODES	CHARLOTTE STALLARD



— Golden Class of 1972 Continued



CHARLES STALLWORTH	PHYLLIS WARING
CAROLYN STAMPS	JARED WATSON
PHYLLIS STARKS-JEFFERY	VALERIE WATSON
HARRY SUTER	PAMELA WEESE
MONNIE TALLEY	THEODORE WHITE
CECELIA TANDY	MARILYN WHITE
*PICOLA TATE	RONALD WIGGLESWORTH
PAMELA TAYLOR	ARTHUR WILLIAMS
KENNETH TAYLOR	BRUCE WILLIAMS
JO ANNE TAYLOR-BRITT	GREG WILLIAMS
DONALD THAXTON	REGINA WILLIAMS
OLIVIA WHYTE THOMAS	*CASTIL WILLIAMS
EILEEN DAVIS THOMAS	DEAN WILLIAMS
DORIS THOMPSON	*RODNEY WILSON
JEWELL THOMPSON	WILL WILSON
MERYL THORNTON	NANCY FISHER WINCHESTER
MARTHA THORPE	RONALD WISE
HINDA TENTMAN THURMAN	PHYLLIS YANCEY
*MADRIENNE TOMLIN	WILLIAM YOUNG
LURETHEIA TUCKER-RUCKER	ELOISE YOUNT
ANNE VAUGHN	
AZALENE WALKER	
GRANT WALKER	
SHARON WALKER	
*ANN WARD	*Deceased members of the Class of 1972





# 2022 Deans and Chairs Listing

## Deans

**DR. KIRK W. POMPER**  
Dean  
College of Agriculture,  
Communities and the Sciences

**DR. DAVID SHABAZZ**  
Interim Dean  
College of the Humanities,  
Business and Society

**DR. TAKEIA ANTHONY**  
Interim Dean  
Whitney Young Honors Collegium

## Director

**DR. TAKEIA ANTHONY**  
Interim Director, Graduate Studies

## Chairs

**DR. MINDY BROOKS-EAVES**  
Chair, School of Social Work

**MS. LAQUIDA SMITH**  
Chair, School of Behavioral  
and Social Sciences

**MR. ALVIN LEVEL**  
Chair, School of Humanities  
and Performing Arts

**DR. CHI SHEN**  
Chair, School of Science,  
Technology, Engineering and Math

**DR. MARY ELLEN BROADDUS**  
Program Administrator  
School of Nursing

**MS. LISA TURNER**  
Director, Undergraduate Nursing Program

**MR. DANNY COLLUM**  
Associate Chair, Literature,  
Language and Philosophy

**DR. PHILLIP CLAY**  
Chair, School of Education,  
Human Development,  
and Consumer Sciences

**DR. ELGIE C. MCFAYDEN**  
Chair, School of  
Public Administration  
and Political Science

**DR. JAMES H. TIDWELL**  
Chair, School of Aquaculture  
and Aquatics Sciences

**DR. GARY STRATTON**  
Chair, School of Business

**DR. MARCUS BERNARD**  
Chair, School of Agriculture,  
Communities and the Environment

**DR. FREDERICK WILLIAMS**  
Chair, School of Criminal Justice





# 2022 Faculty Listing

## COLLEGE OF AGRICULTURE, COMMUNITIES, AND THE ENVIRONMENT

### *School of Aquaculture and Aquatic Sciences*

#### **Robert Durborow**

Interim Associate Research Director  
Professor of Fish Diseases  
Ph.D., Auburn University

#### **Boris Gomelsky**

Professor of Fish Genetics  
Ph.D., Institute of Developmental Biology,  
Russian Academy of Sciences (Moscow)

#### **Noel Novelo**

Assistant Extension Professor  
of Aquaculture  
Ph.D., Louisiana State University

#### **Andrew Ray**

Associate Professor  
of Production Aquaculture  
Ph.D., University Southern Mississippi

#### **Waldemar Rossi**

Assistant Research Professor  
of Aquaculture Nutrition  
Ph.D., Texas A&M University

#### **Kenneth Semmens**

Associate Professor of Aquaculture –  
Physiology and Reproduction  
Ph.D., Auburn University

#### **James Tidwell**

Chair of Aquaculture  
and Aquatics Sciences  
Professor of Alternative  
Aquaculture Production  
Ph.D., Mississippi State University

### *School of Agriculture, Communities and the Environment*

#### **George Antonious**

Professor of Environmental  
Toxicology/Soil Enzymes  
Ph.D., University of Alexandria (Egypt)

#### **Frederick Bebe**

Assistant Professor  
Ph.D., University of Science,  
Arts and Technology

#### **Marcus Bernard**

Chair of Agriculture, Communities  
and the Environment  
Associate Professor of Agriculture,  
Economic and Rural Sociology  
Ph.D., University of Kentucky

#### **Anuj Chilawal**

Assistant Professor of Agronomy  
Ph.D., Kansas State University

#### **Chinonso Etumnu**

Assistant Professor  
of Agricultural Economics  
Ph.D., Purdue University

#### **Maheteme Gebremedhin**

Associate Professor of Soil Science  
Ph.D., Alabama A&M University

#### **Buddhi Gyawali**

Professor of Geographic Information  
Systems, Remote Sensing and Environment  
Ph.D., Alabama A&M University

#### **Yun Jiang**

Assistant Professor  
Ph.D., University of Florida

#### **Hideka Kobayashi**

Assistant Professor  
of Ornamental Horticulture  
Ph.D., University of Illinois

#### **Jerusha Lay**

Assistant Professor of Veterinary Science  
D.V.M., Auburn University





— Faculty Listing Continued

**Shawn Lucas**

Assistant Professor of Organic Agriculture  
Ph.D., University of Kentucky

**Atanu Mukherjee**

Assistant Professor  
of Wetland and Water Quality  
Ph.D., University of Florida

**Farida Olden**

Associate Professor of Biotechnology  
Ph.D., Justus Liebig University (Germany)

**Kirk W. Pomper**

Dean, Director of Land Grant Programs  
Professor of Horticulture  
Ph.D., Oregon State University

**John Sedlacek**

Professor of Entomology  
Ph.D., University of Kentucky

**Marion Simon**

Extension Professor, State Specialist  
for Small Farms and Part-time Farmers  
Ph.D., Oklahoma State University

**Avinash Topé**

Associate Professor  
of Human Nutrition and Food Safety  
Ph.D., Osmania University (India)

**Thomas Webster**

Professor of Apiculture  
Ph.D., University of California – Davis

### *School of Science, Technology, Engineering and Mathematics*

**Jyotica Batra**

Assistant Professor of Physics  
Ph.D., Florida State University

**Fariba Bigdeli-Jahed**

Associate Professor of Mathematics  
Ph.D., University of Kentucky

**Bruce Griffis**

Assistant Professor of Biology  
M.S., University of Kentucky

**Sarah Hadaidi**

Instructor of Mathematics  
M.S., University of Kentucky

**Fariba Kashan**

Assistant Professor of Mathematics  
Ph.D., University of Louisville

**Dharma Khatiwada**

Assistant Professor of Physics  
Ph.D., Florida Atlantic University

**Alexander Lai**

Associate Professor of Biology  
Ph.D., City University of New York,  
Icahn School of Medicine

**Li Lu**

Associate Professor of Biology  
Ph.D., Miami University

**Richard Maiti**

Assistant Professor of Computer Science  
Ph.D., Nova Southeastern University

**Whitni Milton**

Assistant Professor of Biology  
M.D., Tulane University

**Suzette Polson**

Associate Professor of Chemistry  
Ph.D., Emory University

**Johnathan Rogers**

Assistant Professor of Mathematics  
M.A., Eastern Kentucky University

**Rita Sharma**

Associate Professor of Chemistry  
Ph.D., Kurukshetra University (India)

**Chi Shen**

Chair of Science, Technology, Engineering  
and Mathematics  
Professor of Computer Science  
Ph.D., University of Kentucky

**Scott Wicker**

Associate Professor of Chemistry  
Ph.D., Southern University & A&M College

**Jerome Walker**

Assistant Professor of Computer Science  
M.S., Kentucky State University

**Clifton Wise**

Assistant Professor of Computer Science  
Ed.D., Northcentral University





*School of Education,  
Human Development,  
and Consumer Sciences*

**Phillip Clay**

Chair of Education, Human Development,  
and Consumer Sciences  
Coordinator, Disability Resource Center  
Associate Professor of Education  
Ed.D., University of the Cumberlands

**Stashia L. Emanuel**

Associate Professor of Education  
Ed.D., Argosy University

**LeChrista Finn**

Associate Professor  
of Public/Human Health  
Dr.PH., University of Kentucky

**Kristopher Grimes**

Associate Professor of Nutrition and Health  
Ph.D., University of Kentucky

**Leroy Hamilton Jr.**

Provost and Vice President  
for Academic Affairs  
Professor of Education  
Ed.D., University of Phoenix

**Berkley N. King Jr.**

Vice Provost for Academic Affairs  
Associate Professor of Education  
Ph.D., The University  
of Southern Mississippi

**Whitney Lawrence**

Assistant Professor of Education  
Ed.D., University of the Cumberlands

**Ann Lyttle-Burns**

Assistant Professor of Education  
Ed.D., Eastern Kentucky University

**Deverin Muff**

Assistant Professor of Education  
Ed.D., Eastern Kentucky University

**Patrese Nesbitt**

Assistant Professor of Physical Education  
M.S., California University of Pennsylvania

**Sunday Obi**

Professor of Education  
Ed.D., University of Peru

**Herman Walston**

Faculty Regent  
Professor of Child Development and Family  
Relations  
Ed.D., Vanderbilt University

**Changzheng Wang**

Professor of Food Science and Human  
Nutrition  
Ph.D., University of Florida

**Allison Young**

Associate Extension Professor  
of Family and Consumer Sciences  
Ph.D., University of Minnesota

*School of Nursing*

**Abdullah Alhurani**

Associate Professor of Nursing  
Ph.D., University of Kentucky

**Mary Ellen Broaddus**

Program Administrator, School of Nursing  
Associate Professor of Nursing  
D.N.P., Bellarmine University

**Joy Coles**

D.N.P. Tract Coordinator  
Assistant Professor of Nursing  
D.N.P., University of Kentucky

**Faith Ighile**

D.N.P. Program Coordinator  
Instructor of Nursing  
D.N.P., Walden University

**Shawna Mann**

Assistant Professor of Nursing  
M.S.N., Chamberlain University

**Rebecca McCoy**

Assistant Professor of Nursing  
M.S.N., Bellarmine University

**Emily Messerli**

Assistant Professor of Nursing  
D.N.P., University of Kentucky

**John Royalty**

Instructor of Nursing  
B.S.N., Kentucky State University

**Renee Sinkhorn**

Assistant Professor of Nursing  
M.S.N./M.H.A., University of Phoenix

**David Tackett**

Assistant Professor of Nursing  
M.S.N., Northern Kentucky University





— Faculty Listing Continued

**Lisa Turner**

Director, Undergraduate Nursing Program  
Assistant Professor of Nursing  
M.S.N., Indiana Wesleyan University

**Barbara Witty**

Assistant Professor of Nursing  
M.S.N., University of Louisville

**COLLEGE OF THE  
HUMANITIES, BUSINESS  
AND SOCIETY**

*School of Business*

**Swagata Banerjee**

Associate Professor  
of Economics and Finance  
Ph.D., University of Georgia

**René Desborde**

Professor of Marketing  
Ph.D., Florida State University

**Charles Nichols**

Assistant Professor of Management  
Ph.D., Union Institute

**James Obielodan**

Professor of Management and Management  
Information Systems  
Ph.D., Michigan State University

**Gary Stratton**

Chair of Business  
Associate Professor  
of Economics and Finance  
Ph.D., Clemson University

**Abdul Turay**

Professor of Economics  
Ph.D., University of Oklahoma

*School of Behavioral  
and Social Sciences*

**Mary Barr**

Assistant Professor of Sociology  
Ph.D., Yale University

**Lana M. Browning-Wainscott**

Instructor of Behavioral Sciences  
M.A., Kentucky State University

**Nancy Capriles**

Associate Professor of Psychology  
Ph.D., National University of Cordoba  
(Argentina)

**Tierra Freeman-Taylor**

Professor of Psychology  
Ph.D., University of Kentucky

**Cynthia Glass**

Associate Professor of Sociology  
Ph.D., University of Kentucky

**Mara Merlino**

Professor of Psychology  
Ph.D., University of Nevada Reno

**LaQuida Smith**

Chair of Behavioral and Social Sciences  
Instructor of Psychology  
M.A., Kentucky State University

**Catherine Troop**

Assistant Professor of Psychology  
Ph.D., University of Kentucky

*School of Humanities  
and Performing Arts*

**William Brooks**

Assistant Professor of Music and Bands  
M.M., Liberty University

**Robert Griffin**

Associate Professor  
of Music in Applied Percussion  
Assistant Band Director  
Director, University Jazz Ensemble  
M.M., University of Kentucky

**Alvin Level**

Chair of Humanities and Performing Arts  
Director of Bands  
Assistant Professor  
M.A., Saginaw Valley State University

**Lloyd Mallory**

Director of Choral Activities  
Associate Professor  
D.M.A., University of California

**Keith McCutchen**

President, Faculty Senate  
Associate Professor of Music  
Ph.D., Indiana University

**Daniel Whitworth**

Assistant Professor of Low Brass  
M.M., Eastern Kentucky University





— Faculty Listing Continued



*School of Social Work*

**Arthur Hayden**

Associate Professor of Social Work  
Ph.D., University of Louisville

**Mindy Brooks-Eaves**

Chair of Social Work

Assistant Professor

D.S.W., University of St. Thomas

*Division of Literature,  
Languages and Philosophy*

**Shannon Brogan**

Professor of Speech Communication  
Ph.D., Ohio University

**Daniel Collum**

Associate Chair of Literature,

Languages and Philosophy

Professor of English

M.F.A., George Mason University

**Willie Davis**

Instructor of English

M.F.A., University of Maryland

**Laura Cullen Glasscock**

Assistant Professor of Journalism

M.A., University of Illinois – Springfield

**Rozina Johnson**

Assistant Professor of English

Ph.D., Saint Louis University

**Deanna McGaughey-Summers**

Assistant Professor of English

Ph.D., University of Louisville

**Keturah Nix**

Assistant Professor of English

Ph.D., Purdue University

**Delmar Reffett Jr.**

Instructor of English

M.A., DePaul University

**David Shabazz**

Acting Dean

Associate Professor of Journalism

Ph.D., Regent University

**Helen Smith**

Associate Professor of English

Ph.D., University of California - San Diego

**Peter Smith**

Professor of English

Ph.D., University of Notre Dame

**James Thornton**

Instructor of English

M.A., Purdue University

**Eslam Omar**

Assistant Professor

Ph.D., Clark Atlanta University

**Wilfred Reilly**

Associate Professor of Political Science

Ph.D., Southern Illinois University

**Monica Valentine**

M.P.A. Program Coordinator

Assistant Professor

Ph.D., Sullivan University

*School of Criminal Justice*

**Reginald Thomas**

Assistant Professor of Criminal Justice

J.D., Harvard University

**Frederick Williams Jr.**

Chair of Criminal Justice

Assistant Professor of Criminal Justice

Ph.D., University of Louisville

*School of Public Administration  
and Political Science*

**Emmanuel Amadife**

Professor of Political Science

Ph.D., University of Connecticut

**Elgie McFayden**

Chair of Public Administration  
and Political Science

Associate Professor

Ph.D., Clark Atlanta University







— Faculty Listing Continued

## *Whitney Young Honors Collegium*

### **TaKeia Anthony**

Interim Dean of Whitney Young Honors  
Interim Director of Graduate Studies  
Academic Support Liaison, CESKAA  
Associate Professor of History  
Ph.D., University of Kentucky

## *Blazer Library*

### **Nkechi Amadife**

Professor  
Ph.D., University of Kentucky

### **Dantrea Hampton**

Assistant Professor  
M.S.L.S., University of Kentucky

### **Sharon McGee**

Professor  
M.S.L.S., University of Kentucky

### **Sheila Stuckey**

Director, Blazer Library  
Associate Professor  
M.L.S., University of Pittsburgh

### **Debbra Tate**

Assistant Professor  
M.S.L.S., University of Kentucky

### **Bobby Walter**

Instructor  
M.L.I.S., Wayne State University



# *The Alma Mater*

*Lyrics by*  
***Frederick Jarmon '43***

*Music Arrangement*  
***Harriet N. Gibbons '45***

HAIL TO OUR ALMA MATER, DEAR IS HER NAME,  
AND THERE SHALL BE NO OTHER TO SURPASS HER FAME.  
HERS IS THE HAND THAT GUIDES US DAY AFTER DAY,  
AND SHE WILL STAND BESIDE US, WHEN WE GO ON OUR WAY.

MAY BLESSINGS BE UPON HER, SHEPHERD OF YOUTH;  
SHE HOLDS THE SEAT OF HONOR, IN THE HALL OF TRUTH.  
MEM'RIES OF HER SHALL NEVER FADE FROM OUR HEARTS,  
AND WE WILL PRAISE HER EVER, FOR THE LOVE SHE IMPARTS.

SING EV'RY VOICE TOGETHER, LET ECHOES RISE.  
HAIL TO OUR ALMA MATER, SHOUT TO THE SKIES.  
HOLDING THE TORCH OF WISDOM, SHE LEADS THE WAY  
CLASPING THE HAND OF FREEDOM, AS SHE MARCHES ALONG.



# Lift Every Voice and Sing

by *J. Rosamond Johnson*  
and *James Weldon Johnson*

LIFT EVERY VOICE AND SING  
TILL EARTH AND HEAVEN RING  
RING WITH THE HARMONIES OF LIBERTY  
LET OUR REJOICING RISE  
HIGH AS THE LISTENING SKIES  
LET IT RESOUND LOUD AS THE ROLLING SEA

SING A SONG FULL OF THE FAITH THAT THE DARK PAST HAS TAUGHT US  
SING A SONG FULL OF THE HOPE THAT THE PRESENT HAS BROUGHT US  
FACING THE RISING SUN OF OUR NEW DAY BEGUN  
LET US MARCH ON TILL VICTORY IS WON

STONY THE ROAD WE TROD  
BITTER THE CHASTENING ROD  
FELT IN THE DAYS WHEN HOPE UNBORN HAD DIED  
YET WITH A STEADY BEAT  
HAVE NOT OUR WEARY FEET  
COME TO THE PLACE FOR WHICH OUR FATHERS SIGHED?

WE HAVE COME OVER A WAY THAT WITH TEARS HAS BEEN WATERED  
WE HAVE COME, TREADING OUR PATH THROUGH THE BLOOD OF THE SLAUGHTERED  
OUT FROM THE GLOOMY PAST  
TILL NOW WE STAND AT LAST  
WHERE THE WHITE GLEAM OF OUR BRIGHT STAR IS CAST

GOD OF OUR WEARY YEARS  
GOD OF OUR SILENT TEARS  
THOU WHO HAS BROUGHT US THUS FAR ON THE WAY  
THOU WHO HAS BY THY MIGHT LED US INTO THE LIGHT  
KEEP US FOREVER IN THE PATH, WE PRAY  
LEST OUR FEET STRAY FROM THE PLACES, OUR GOD, WHERE WE MET THEE

LEST, OUR HEARTS DRUNK WITH THE WINE OF THE WORLD, WE FORGET THEE  
SHADOWED BENEATH THY HAND  
MAY WE FOREVER STAND  
TRUE TO OUR GOD  
TRUE TO OUR NATIVE LAND  
OUR NATIVE LAND



KYSU.EDU  
ONWARD. UPWARD.