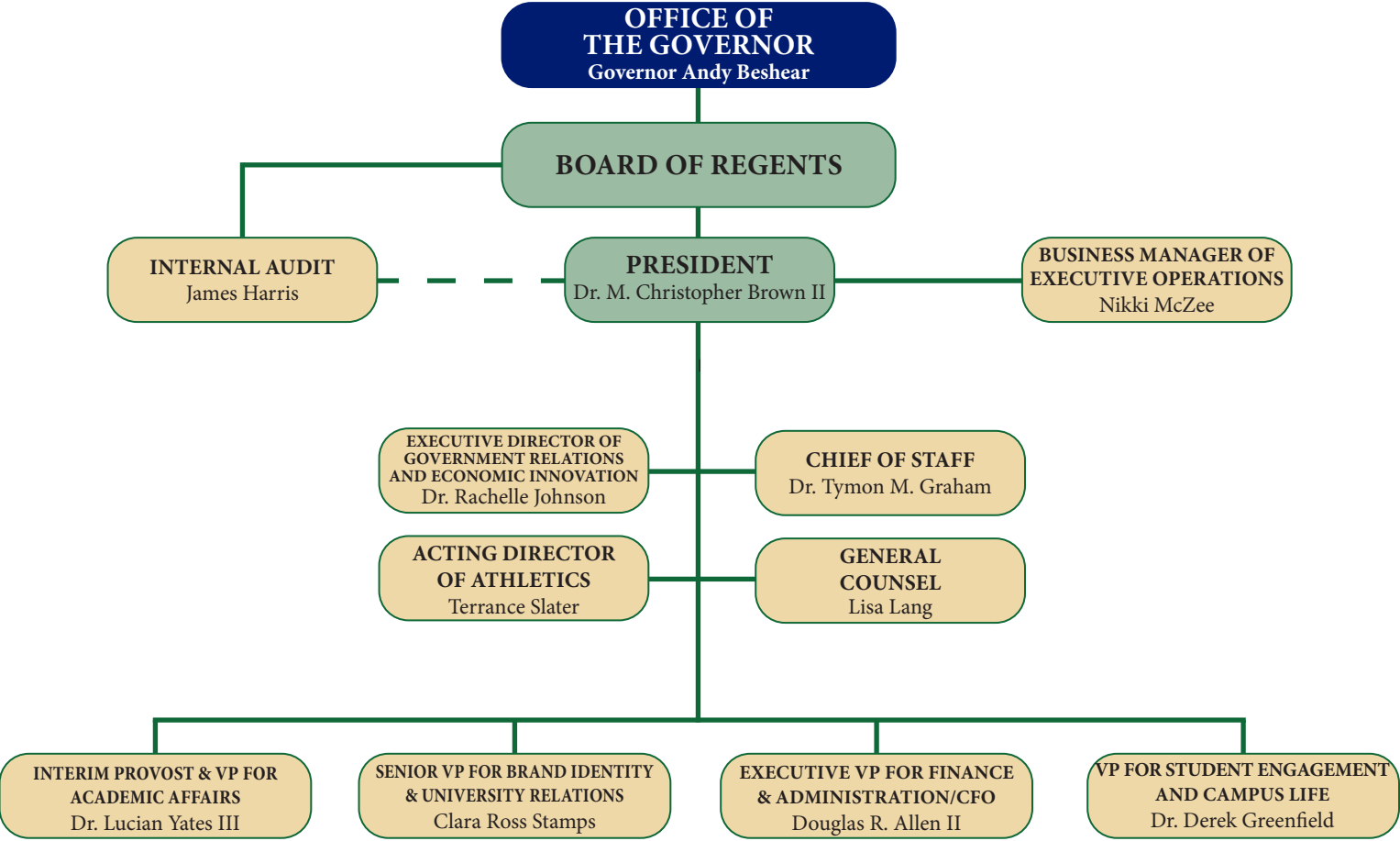
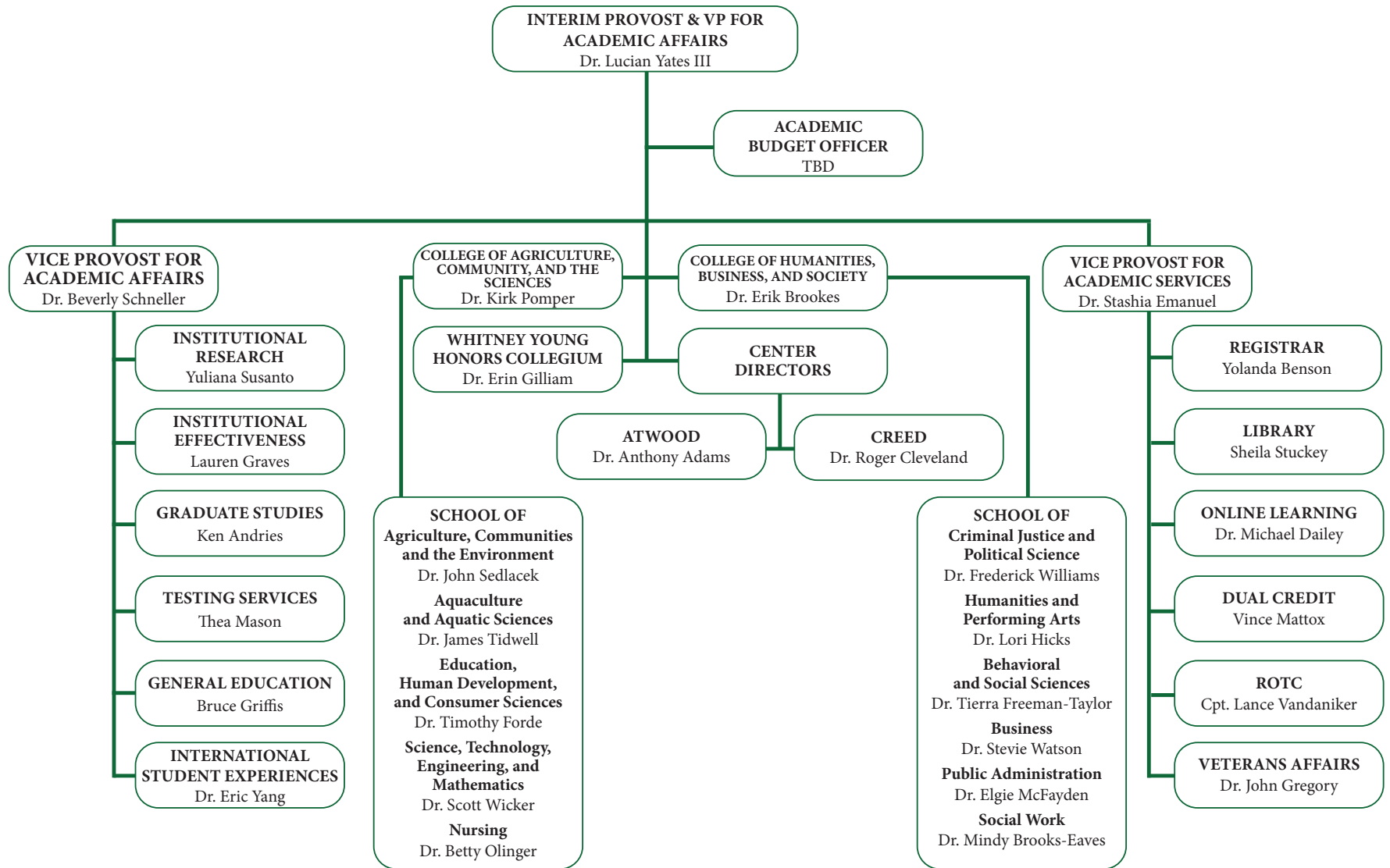


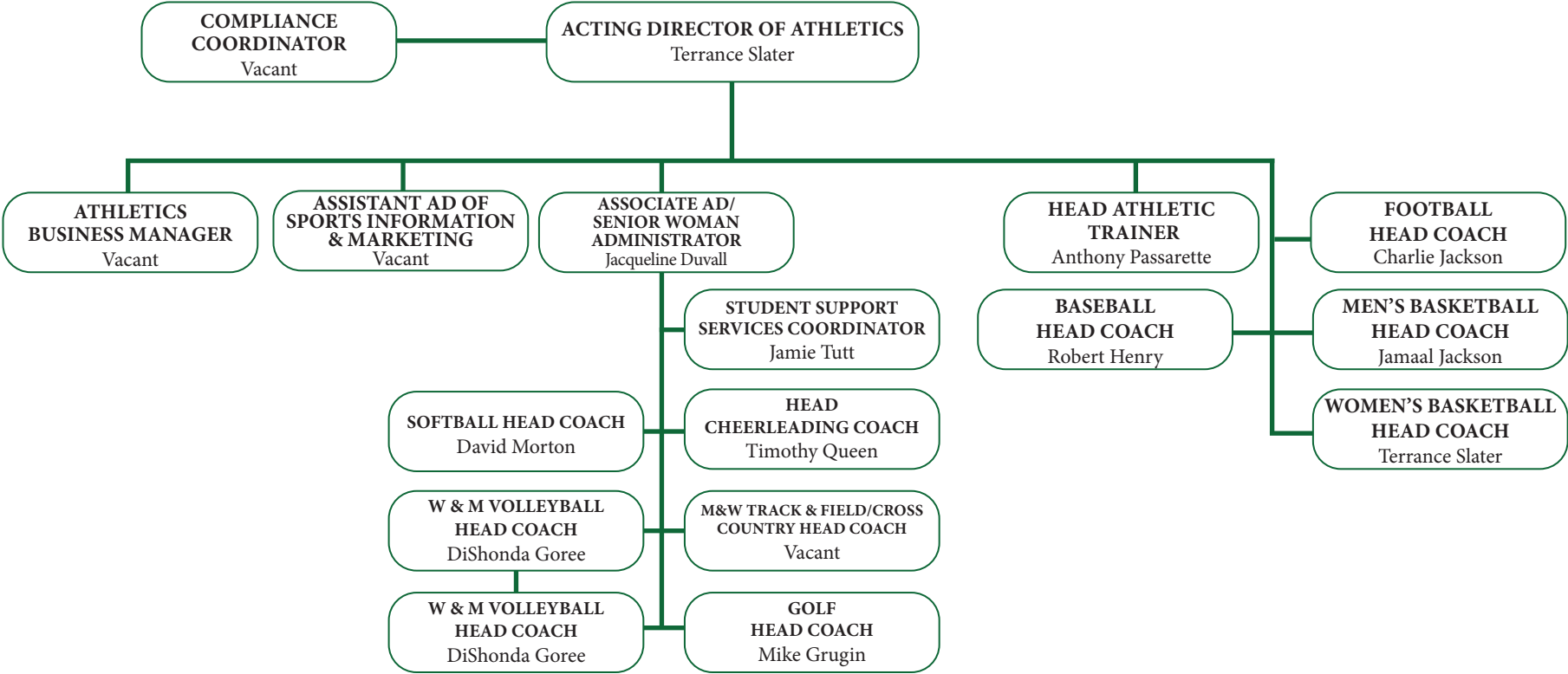
**KENTUCKY STATE UNIVERSITY
SENIOR ADMINISTRATION**



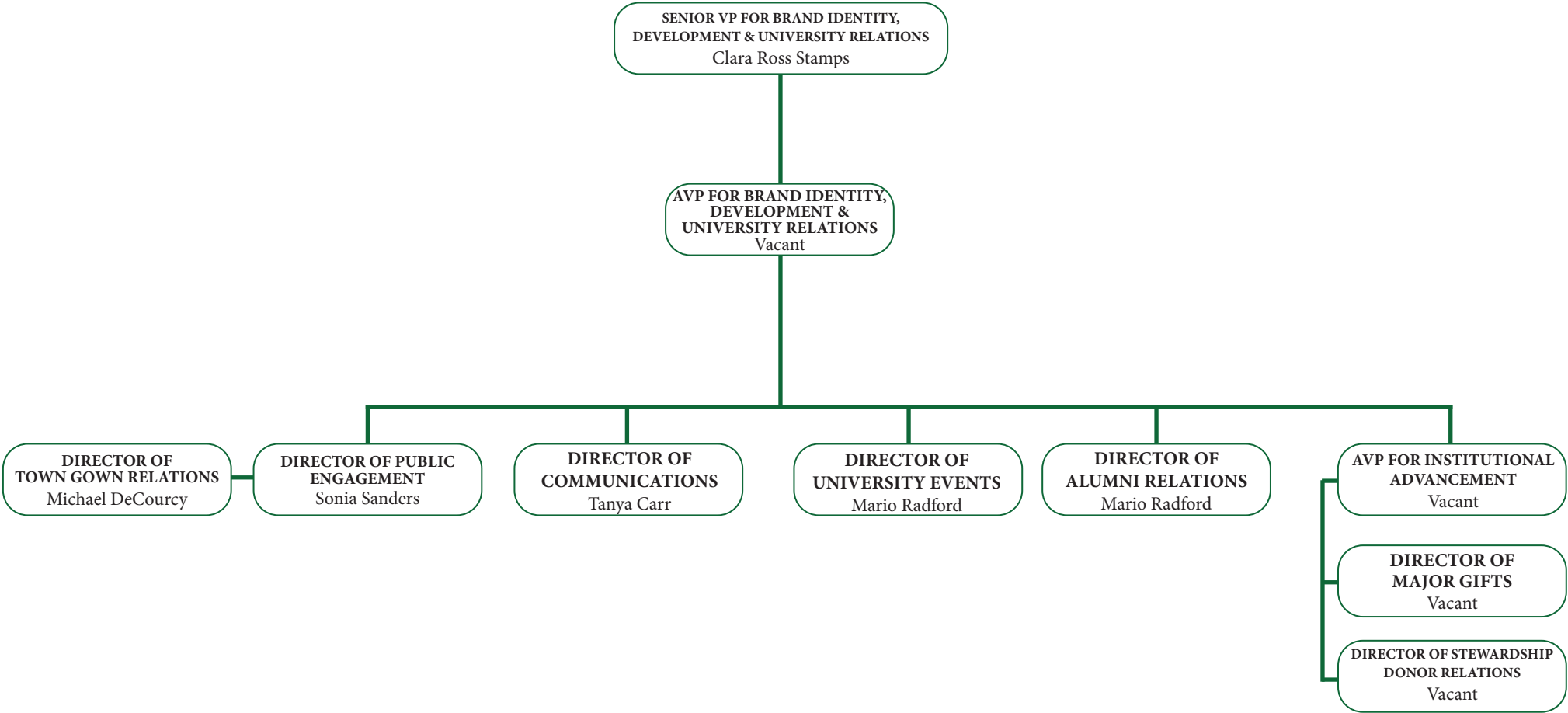
**KENTUCKY STATE UNIVERSITY
DIVISION OF ACADEMIC AFFAIRS**



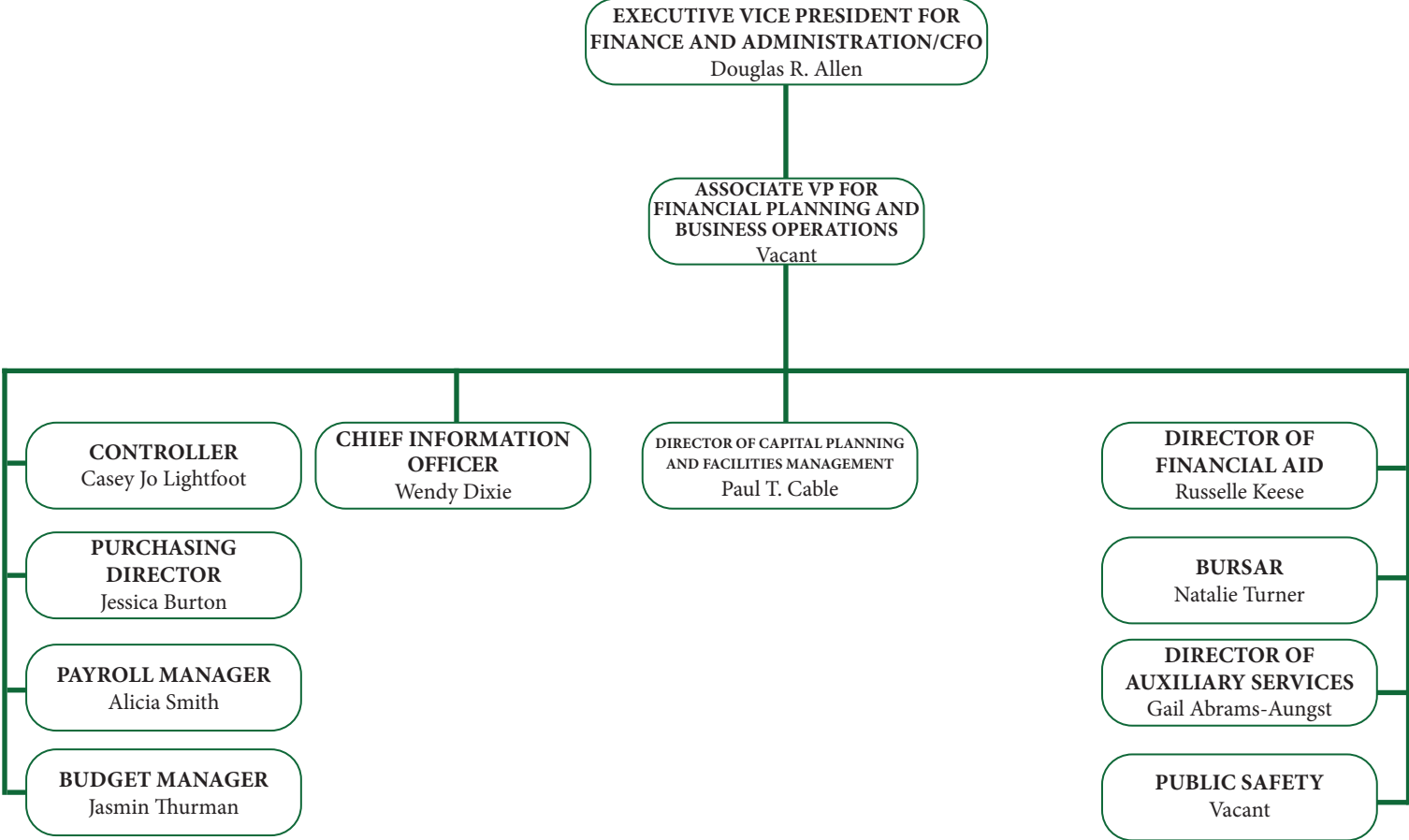
KENTUCKY STATE UNIVERSITY ATHLETICS



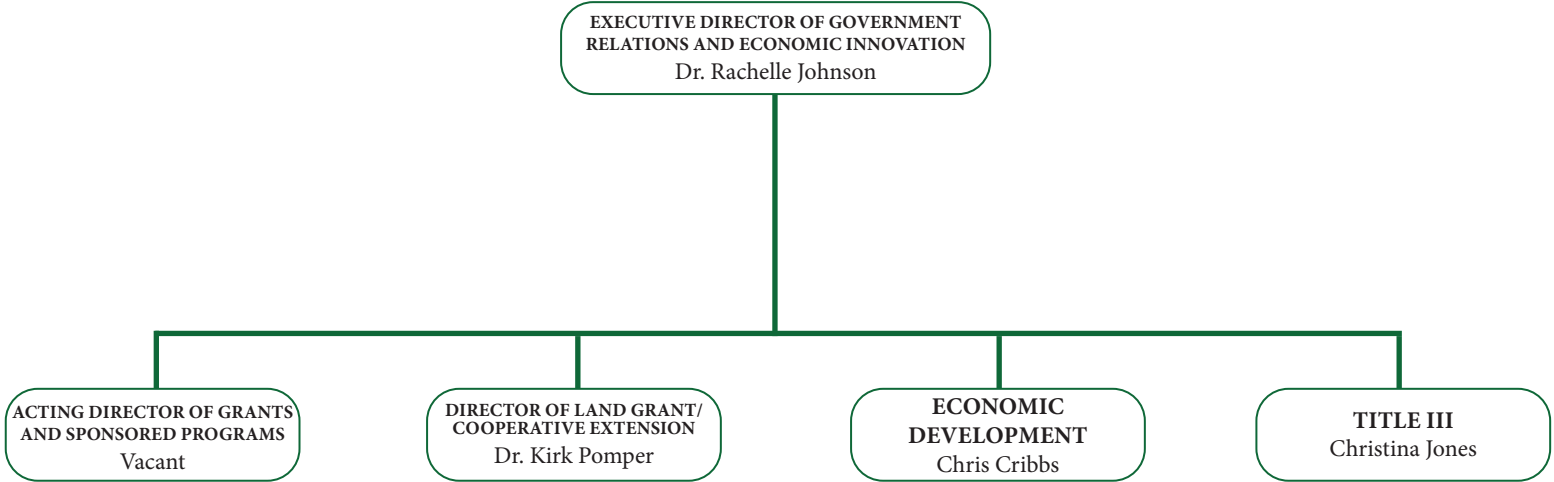
**KENTUCKY STATE UNIVERSITY
DIVISION OF BRAND IDENTITY
AND UNIVERSITY RELATIONS**



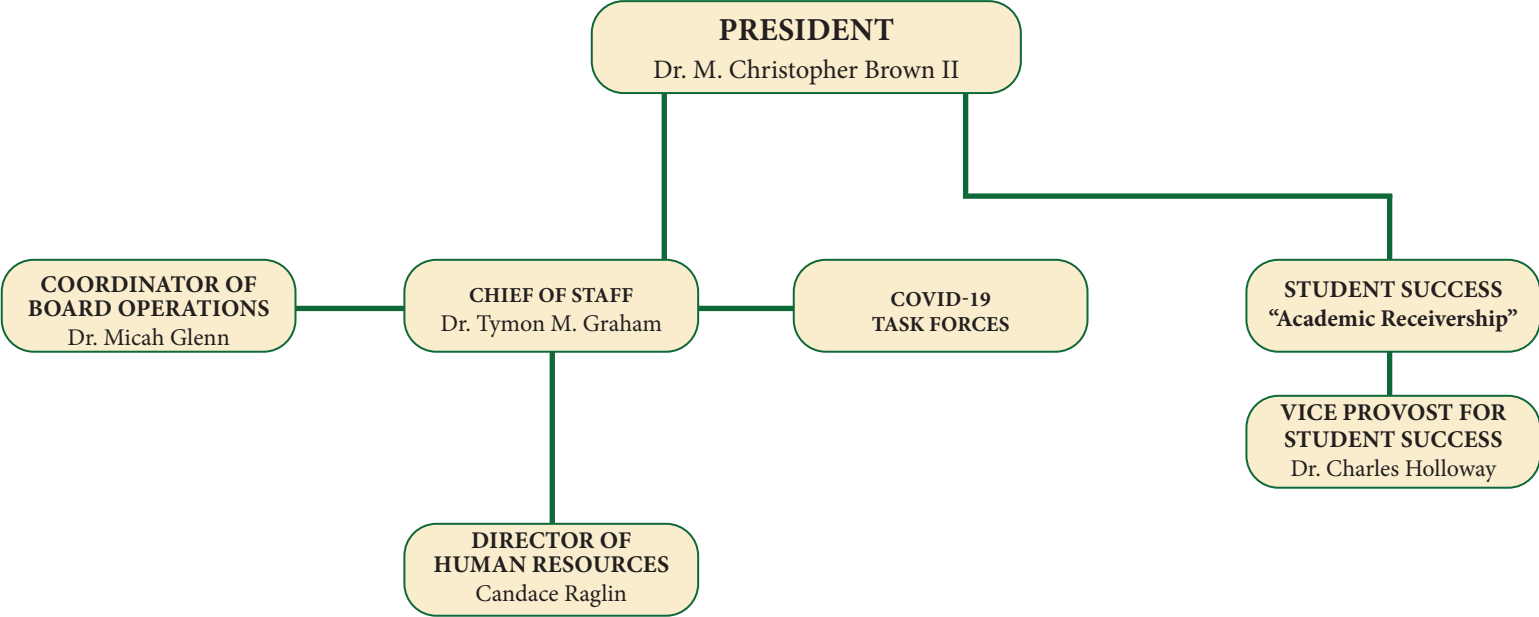
KENTUCKY STATE UNIVERSITY
DIVISION OF FINANCE
AND ADMINISTRATION



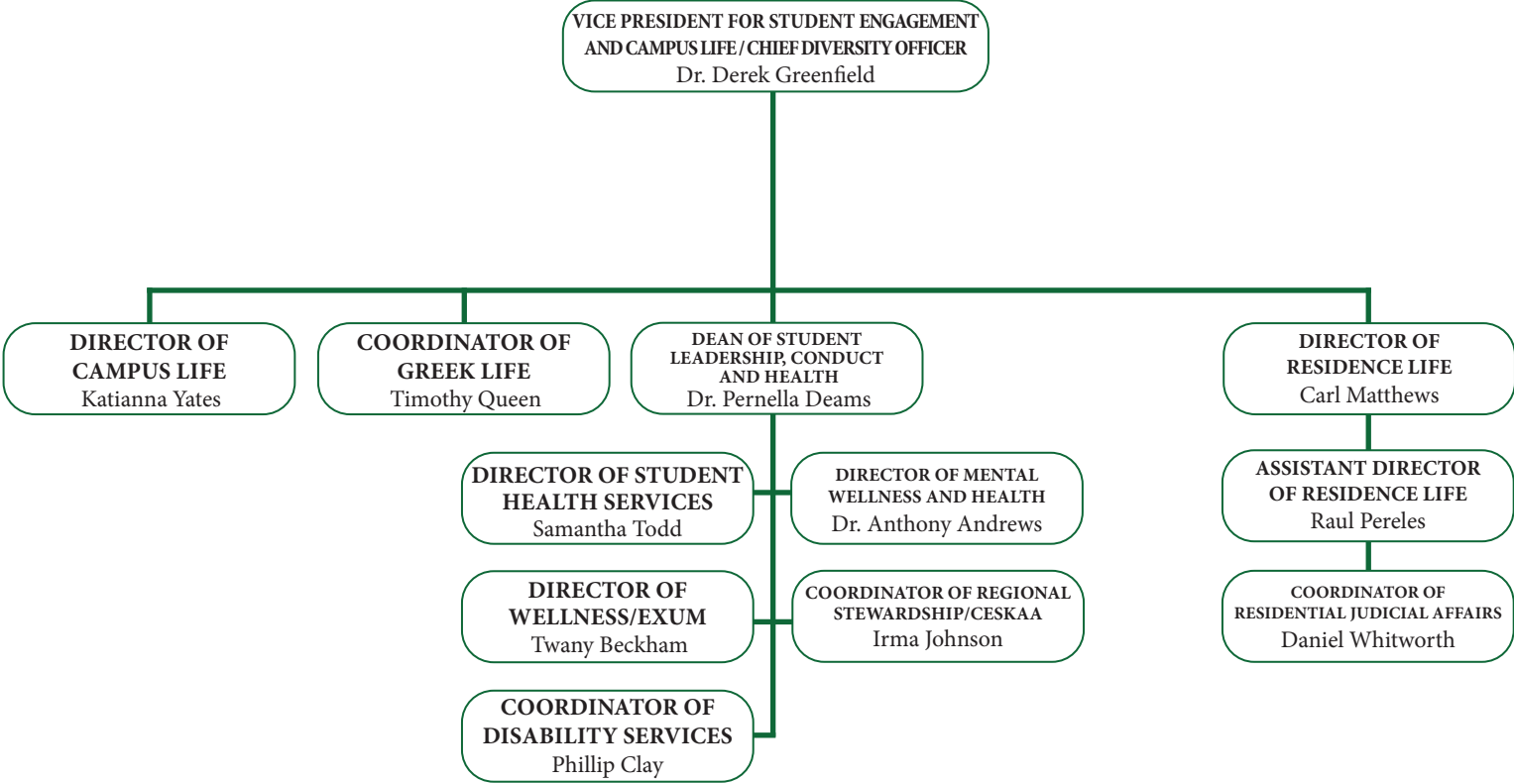
**KENTUCKY STATE UNIVERSITY
OFFICE OF GOVERNMENT RELATIONS
AND ECONOMIC INNOVATION**



**KENTUCKY STATE UNIVERSITY
OFFICE OF THE PRESIDENT**



KENTUCKY STATE UNIVERSITY
DIVISION OF STUDENT ENGAGEMENT AND CAMPUS LIFE



**KENTUCKY STATE UNIVERSITY
STUDENT SUCCESS AND RETENTION
“RECEIVERSHIP”**

